

Datasheet for ABIN7245701

anti-TIA1 antibody

3 Images

[Go to Product page](#)

Overview

Quantity:	200 µL
Target:	TIA1
Reactivity:	Human, Mouse
Host:	Rabbit
Clonality:	Polyclonal
Conjugate:	This TIA1 antibody is un-conjugated
Application:	Western Blotting (WB), Immunohistochemistry (IHC), ELISA

Product Details

Immunogen:	Full length fusion protein
Isotype:	IgG
Characteristics:	Polyclonal Antibody
Purification:	Antigen affinity purification

Target Details

Target:	TIA1
Alternative Name:	TIA1 (TIA1 Products)
Background:	The product encoded by this gene is a member of a RNA-binding protein family and possesses nucleolytic activity against cytotoxic lymphocyte (CTL) target cells. It has been suggested that this protein may be involved in the induction of apoptosis as it preferentially recognizes poly(A) homopolymers and induces DNA fragmentation in CTL targets. The major granule-associated

Target Details

species is a 15- kDa protein that is thought to be derived from the carboxyl terminus of the 40- kDa product by proteolytic processing. Alternative splicing resulting in different isoforms of this gene product has been described in the literature.

Molecular Weight: Observed_MW: Refer to figures
Calculated_MW: 43 kDa

UniProt: [P31483](#)

Application Details

Application Notes: WB 1:500-1:2000, IHC 1:25-1:100, ELISA 1:5000-1:10000

Restrictions: For Research Use only

Handling

Format: Liquid

Concentration: 0.4 mg/mL

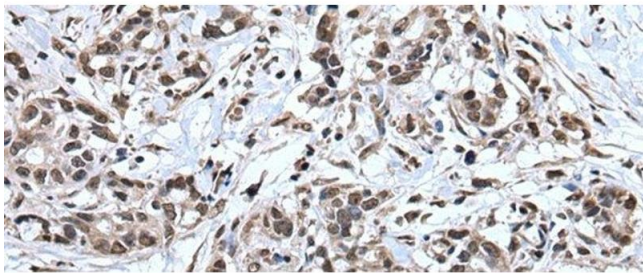
Buffer: PBS with 0.05 % Sodium azide and 40 % Glycerol, pH 7.4

Preservative: Sodium azide

Precaution of Use: This product contains Sodium azide: a POISONOUS AND HAZARDOUS SUBSTANCE which should be handled by trained staff only.

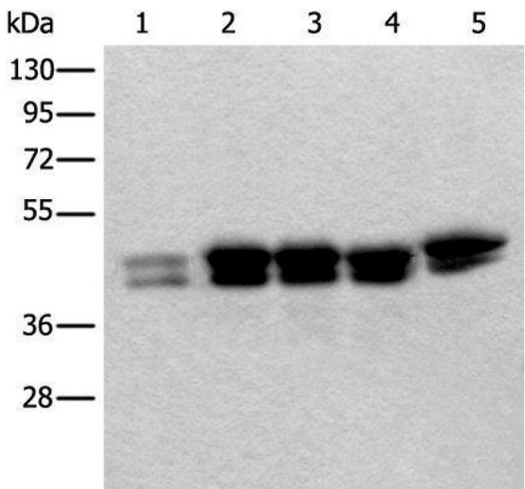
Storage: -20 °C

Storage Comment: Store at -20°C. Avoid freeze / thaw cycles.



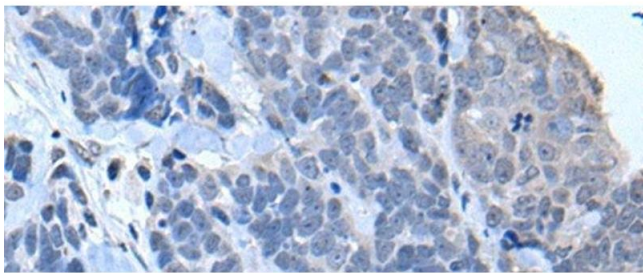
Immunohistochemistry (Paraffin-embedded Sections)

Image 1. Immunohistochemistry of paraffin-embedded Human gastric cancer tissue using TIA1 Polyclonal Antibody at dilution of 1:30(x200)



Western Blotting

Image 2. Western blot analysis of 293T HeLa and HEPG2 cell lysates using TIA1 Polyclonal Antibody at dilution of 1:250



Immunohistochemistry (Paraffin-embedded Sections)

Image 3. Immunohistochemistry of paraffin-embedded Human thyroid cancer tissue using TIA1 Polyclonal Antibody at dilution of 1:30(x200)