

Datasheet for ABIN7245719

anti-WDR4 antibody**2** Images[Go to Product page](#)

Overview

Quantity:	200 µL
Target:	WDR4
Reactivity:	Human, Mouse
Host:	Rabbit
Clonality:	Polyclonal
Conjugate:	This WDR4 antibody is un-conjugated
Application:	Western Blotting (WB), ELISA, Immunohistochemistry (IHC)

Product Details

Immunogen:	Fusion protein of human WDR4
Isotype:	IgG
Characteristics:	Polyclonal Antibody
Purification:	Antigen affinity purification

Target Details

Target:	WDR4
Alternative Name:	WDR4 (WDR4 Products)
Background:	This gene encodes a member of the WD repeat protein family. WD repeats are minimally conserved regions of approximately 40 amino acids typically bracketed by gly-his and trp-aspartate (GH-WD), which may facilitate formation of heterotrimeric or multiprotein complexes. Members of this family are involved in a variety of cellular processes, including cell cycle progression,

Target Details

signal transduction, apoptosis, and gene regulation.

Molecular Weight: Observed_MW: Refer to figures
Calculated_MW: 45 kDa

UniProt: [P57081](#)

Application Details

Application Notes: WB 1:500-1:2000, IHC 1:50-1:100, ELISA 1:5000-1:10000

Restrictions: For Research Use only

Handling

Format: Liquid

Concentration: 0.6 mg/mL

Buffer: PBS with 0.05 % Sodium azide and 40 % Glycerol, pH 7.4

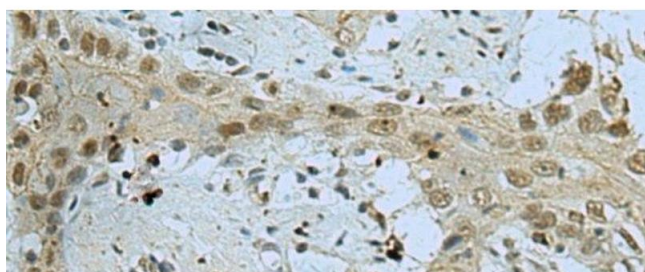
Preservative: Sodium azide

Precaution of Use: This product contains Sodium azide: a POISONOUS AND HAZARDOUS SUBSTANCE which should be handled by trained staff only.

Storage: -20 °C

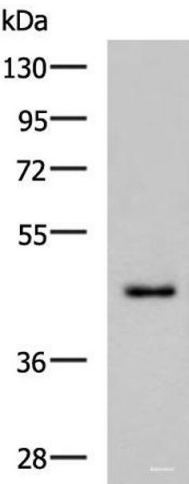
Storage Comment: Store at -20°C. Avoid freeze / thaw cycles.

Images



Immunohistochemistry (Paraffin-embedded Sections)

Image 1. Immunohistochemistry of paraffin-embedded Human esophagus cancer tissue using WDR4 Polyclonal Antibody at dilution of 1:40(x200)



Western Blotting

Image 2. Western blot analysis of TM4 cell lysate using WDR4 Polyclonal Antibody at dilution of 1:700