

Datasheet for ABIN7245755

anti-ATF6B antibody**2** Images[Go to Product page](#)

Overview

Quantity:	200 µL
Target:	ATF6B
Reactivity:	Human, Mouse
Host:	Rabbit
Clonality:	Polyclonal
Conjugate:	This ATF6B antibody is un-conjugated
Application:	Western Blotting (WB), ELISA, Immunohistochemistry (IHC)

Product Details

Immunogen:	Fusion protein of human ATF6B
Isotype:	IgG
Characteristics:	Polyclonal Antibody
Purification:	Antigen affinity purification

Target Details

Target:	ATF6B
Alternative Name:	ATF6B (ATF6B Products)
Background:	The protein encoded by this gene is a transcription factor in the unfolded protein response (UPR) pathway during ER stress. Either as a homodimer or as a heterodimer with ATF6-alpha, the encoded protein binds to the ER stress response element, interacting with nuclear transcription factor Y to activate UPR target genes. The protein is normally found in the

Target Details

membrane of the endoplasmic reticulum, however, under ER stress, the N-terminal cytoplasmic domain is cleaved from the rest of the protein and translocates to the nucleus. Two transcript variants encoding different isoforms have been found for this gene.

Molecular Weight: Observed_MW: Refer to figures
Calculated_MW: 77 kDa

UniProt: [Q99941](#)

Pathways: [Thyroid Hormone Synthesis](#), [Myometrial Relaxation and Contraction](#)

Application Details

Application Notes: WB 1:500-1:2000, IHC 1:25-1:100, ELISA 1:5000-1:10000

Restrictions: For Research Use only

Handling

Format: Liquid

Concentration: 0.5 mg/mL

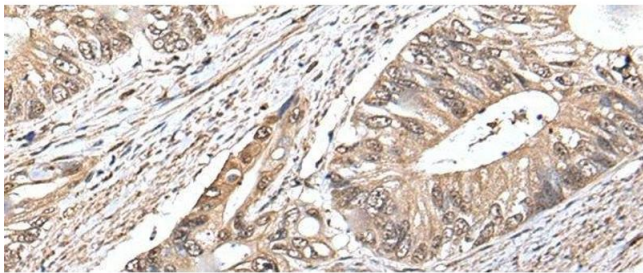
Buffer: PBS with 0.05 % Sodium azide and 40 % Glycerol, pH 7.4

Preservative: Sodium azide

Precaution of Use: This product contains Sodium azide: a POISONOUS AND HAZARDOUS SUBSTANCE which should be handled by trained staff only.

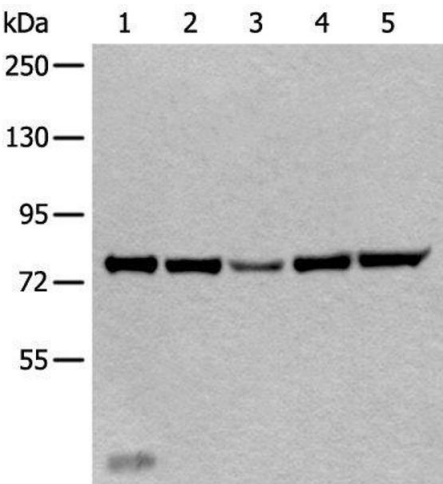
Storage: -20 °C

Storage Comment: Store at -20°C. Avoid freeze / thaw cycles.



Immunohistochemistry (Paraffin-embedded Sections)

Image 1. Immunohistochemistry of paraffin-embedded Human colorectal cancer tissue using ATF6B Polyclonal Antibody at dilution of 1:30(x200)



Western Blotting

Image 2. Western blot analysis of Mouse liver tissue Hela cell Human testis tissue Jurkat and HEPG2 cell lysates using ATF6B Polyclonal Antibody at dilution of 1:300