

Datasheet for ABIN7245767

anti-NDUFB6 antibody[Go to Product page](#)**1** Image

Overview

Quantity:	200 µL
Target:	NDUFB6
Reactivity:	Human
Host:	Rabbit
Clonality:	Polyclonal
Conjugate:	This NDUFB6 antibody is un-conjugated
Application:	ELISA, Western Blotting (WB)

Product Details

Immunogen:	Full length fusion protein
Isotype:	IgG
Characteristics:	Polyclonal Antibody
Purification:	Antigen affinity purification

Target Details

Target:	NDUFB6
Alternative Name:	NDUFB6 (NDUFB6 Products)
Background:	The protein encoded by this gene is a subunit of the multisubunit NADH:ubiquinone oxidoreductase (complex I). Mammalian complex I is composed of 45 different subunits. It locates at the mitochondrial inner membrane. This protein has NADH dehydrogenase activity and oxidoreductase activity. It transfers electrons from NADH to the respiratory chain. The

Target Details

immediate electron acceptor for the enzyme is believed to be ubiquinone. Alternative splicing occurs at this locus and three transcript variants encoding distinct isoforms have been identified.

Molecular Weight: Observed_MW: Refer to figures
Calculated_MW: 15 kDa

UniProt: [O95139](#)

Application Details

Application Notes: WB 1:500-1:2000, ELISA 1:5000-1:10000

Restrictions: For Research Use only

Handling

Format: Liquid

Concentration: 0.4 mg/mL

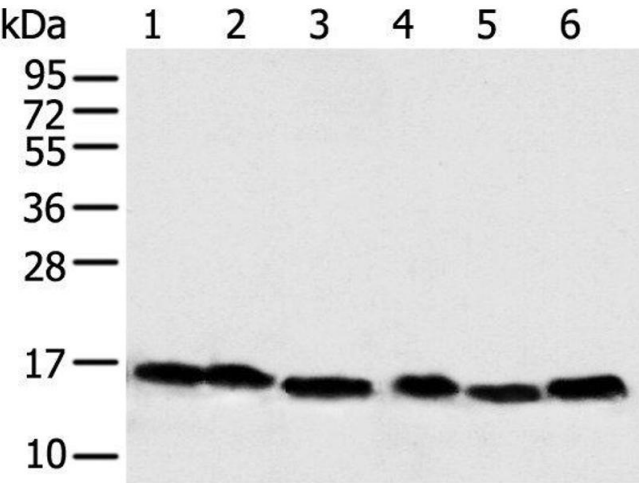
Buffer: PBS with 0.05 % Sodium azide and 40 % Glycerol, pH 7.4

Preservative: Sodium azide

Precaution of Use: This product contains Sodium azide: a POISONOUS AND HAZARDOUS SUBSTANCE which should be handled by trained staff only.

Storage: -20 °C

Storage Comment: Store at -20°C. Avoid freeze / thaw cycles.



Western Blotting

Image 1. Western blot analysis of 293T Hela PC-3 Lncap and 231 cell Human fetal muscle tissue using NDUFB6 Polyclonal Antibody at dilution of 1:500