

Datasheet for ABIN7245803

anti-PSMF1 antibody**2** Images[Go to Product page](#)

Overview

Quantity:	200 µL
Target:	PSMF1
Reactivity:	Human, Mouse, Rat
Host:	Rabbit
Clonality:	Polyclonal
Conjugate:	This PSMF1 antibody is un-conjugated
Application:	Western Blotting (WB), ELISA, Immunohistochemistry (IHC)

Product Details

Immunogen:	Full length fusion protein
Isotype:	IgG
Characteristics:	Polyclonal Antibody
Purification:	Antigen affinity purification

Target Details

Target:	PSMF1
Alternative Name:	PSMF1 (PSMF1 Products)
Background:	The 26S proteasome is a multicatalytic proteinase complex with a highly ordered structure composed of 2 complexes, a 20S core and a 19S regulator. The 20S core is composed of 4 rings of 28 non-identical subunits, 2 rings are composed of 7 alpha subunits and 2 rings are composed of 7 beta subunits. The 19S regulator is composed of a base, which contains 6

Target Details

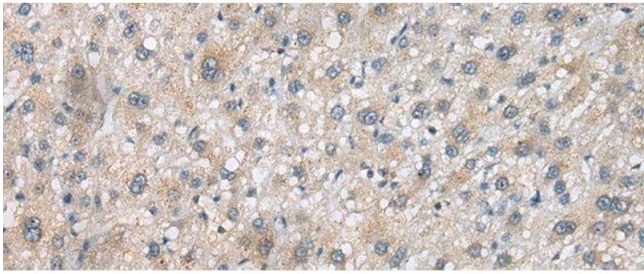
	ATPase subunits and 2 non-ATPase subunits, and a lid, which contains up to 10 non-ATPase subunits.
Molecular Weight:	Observed_MW: Refer to figures Calculated_MW: 30 kDa
UniProt:	Q92530
Pathways:	Mitotic G1-G1/S Phases , DNA Replication , Synthesis of DNA

Application Details

Application Notes:	WB 1:500-1:2000, IHC 1:25-1:100, ELISA 1:5000-1:10000
Restrictions:	For Research Use only

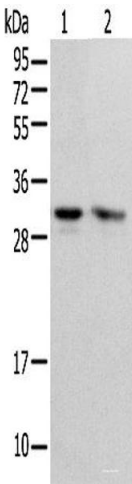
Handling

Format:	Liquid
Concentration:	0.9 mg/mL
Buffer:	PBS with 0.05 % Sodium azide and 40 % Glycerol, pH 7.4
Preservative:	Sodium azide
Precaution of Use:	This product contains Sodium azide: a POISONOUS AND HAZARDOUS SUBSTANCE which should be handled by trained staff only.
Storage:	-20 °C
Storage Comment:	Store at -20°C. Avoid freeze / thaw cycles.



Immunohistochemistry (Paraffin-embedded Sections)

Image 1. Immunohistochemistry of paraffin-embedded Human liver cancer tissue using PSMF1 Polyclonal Antibody at dilution of 1:30(x200)



Western Blotting

Image 2. Western blot analysis of HEPG2 and Hela cell using PSMF1 Polyclonal Antibody at dilution of 1:300