



[Go to Product page](#)

Datasheet for ABIN7245809  
**anti-COMMD6 antibody**

2 Images

### Overview

Quantity:	200 µL
Target:	COMMD6
Reactivity:	Human, Mouse
Host:	Rabbit
Clonality:	Polyclonal
Conjugate:	This COMMD6 antibody is un-conjugated
Application:	ELISA, Immunohistochemistry (IHC)

### Product Details

Immunogen:	Full length fusion protein
Isotype:	IgG
Characteristics:	Polyclonal Antibody
Purification:	Antigen affinity purification

### Target Details

Target:	COMMD6
Alternative Name:	COMMD6 ( <a href="#">COMMD6 Products</a> )
Background:	COMMD6 belongs to a family of NF-kappa-B (see RELA, MIM 164014)-inhibiting proteins characterized by the presence of a COMM domain.
UniProt:	<a href="#">Q7Z4G1</a>

## Application Details

---

Application Notes: IHC 1:30-1:150, ELISA 1:5000-1:10000

Restrictions: For Research Use only

## Handling

---

Format: Liquid

Concentration: 1.4 mg/mL

Buffer: PBS with 0.05 % Sodium azide and 40 % Glycerol, pH 7.4

Preservative: Sodium azide

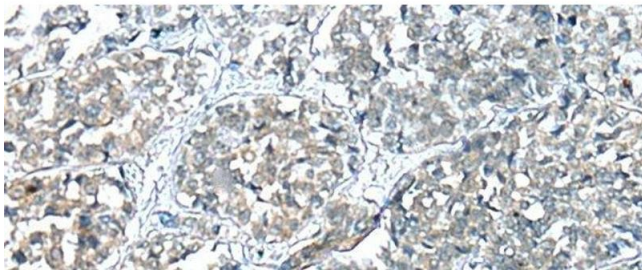
Precaution of Use: This product contains Sodium azide: a POISONOUS AND HAZARDOUS SUBSTANCE which should be handled by trained staff only.

Storage: -20 °C

Storage Comment: Store at -20°C. Avoid freeze / thaw cycles.

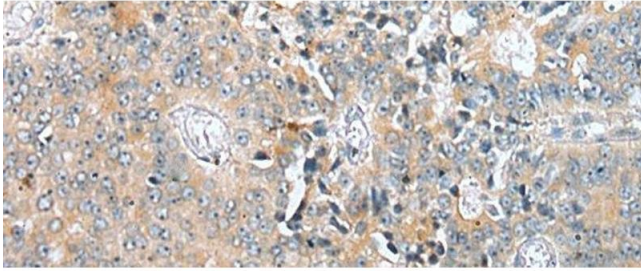
## Images

---



### Immunohistochemistry (Paraffin-embedded Sections)

**Image 1.** Immunohistochemistry of paraffin-embedded Human esophagus cancer tissue using COMMD6 Polyclonal Antibody at dilution of 1:45(x200)



### Immunohistochemistry (Paraffin-embedded Sections)

**Image 2.** Immunohistochemistry of paraffin-embedded Human prostate cancer tissue using COMMD6 Polyclonal Antibody at dilution of 1:45(x200)