

Datasheet for ABIN7245812

anti-SPCS2 antibody**3** Images[Go to Product page](#)

Overview

Quantity:	200 µL
Target:	SPCS2
Reactivity:	Human, Mouse, Rat
Host:	Rabbit
Clonality:	Polyclonal
Conjugate:	This SPCS2 antibody is un-conjugated
Application:	ELISA, Western Blotting (WB), Immunohistochemistry (IHC)

Product Details

Immunogen:	Fusion protein of human SPCS2
Isotype:	IgG
Characteristics:	Polyclonal Antibody
Purification:	Antigen affinity purification

Target Details

Target:	SPCS2
Alternative Name:	SPCS2 (SPCS2 Products)
Background:	SPCS2 (signal peptidase complex subunit 2), also known as SPC25 or microsomal signal peptidase 25 kDa subunit, is a 226 amino acid multi-pass membrane protein that localizes to both the microsome and the endoplasmic reticulum (ER), and belongs to the SPCS (signal peptidase complex subunit) family. Existing as a component of the microsomal signal

Target Details

peptidase complex which consists of five members, SPCS2 removes signal peptides from nascent proteins as they are translocated into the lumen of the ER. The gene encoding SPCS2 is located on human chromosome 11, which houses over 1,400 genes and comprises nearly 4 % of the human genome.

Molecular Weight: Observed_MW: Refer to figures
Calculated_MW: 25 kDa

UniProt: [Q15005](#)

Pathways: [Peptide Hormone Metabolism](#)

Application Details

Application Notes: WB 1:500-1:2000, IHC 1:30-1:150, ELISA 1:5000-1:10000

Restrictions: For Research Use only

Handling

Format: Liquid

Concentration: 1.1 mg/mL

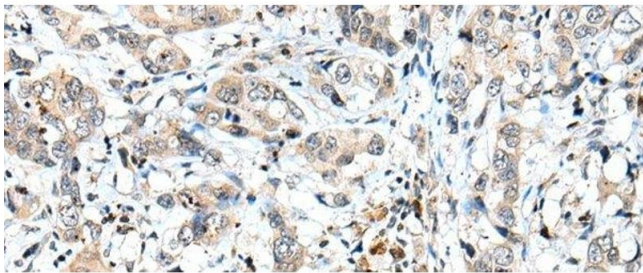
Buffer: PBS with 0.05 % Sodium azide and 40 % Glycerol, pH 7.4

Preservative: Sodium azide

Precaution of Use: This product contains Sodium azide: a POISONOUS AND HAZARDOUS SUBSTANCE which should be handled by trained staff only.

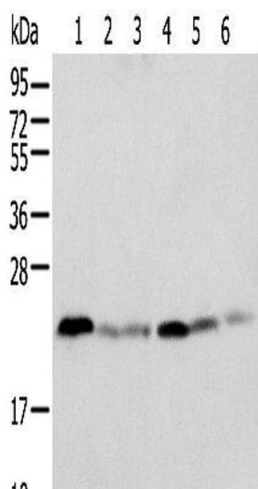
Storage: -20 °C

Storage Comment: Store at -20°C. Avoid freeze / thaw cycles.



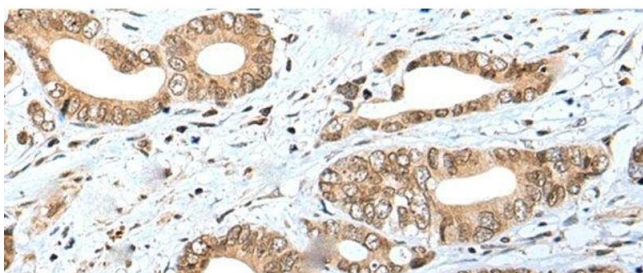
Immunohistochemistry (Paraffin-embedded Sections)

Image 1. Immunohistochemistry of paraffin-embedded Human breast cancer tissue using SPCS2 Polyclonal Antibody at dilution of 1:40(x200)



Western Blotting

Image 2. Western blot analysis of K-562 cell Human placenta tissue Mouse adrenal gland tissue HT-29 cell NIH/3T3 cell Rat lung tissue using SPCS2 Polyclonal Antibody at dilution of 1:500



Immunohistochemistry (Paraffin-embedded Sections)

Image 3. Immunohistochemistry of paraffin-embedded Human gastric cancer tissue using SPCS2 Polyclonal Antibody at dilution of 1:40(x200)