

Datasheet for ABIN7245824

**anti-GRAP antibody****2** Images[Go to Product page](#)

## Overview

|              |                                     |
|--------------|-------------------------------------|
| Quantity:    | 200 µL                              |
| Target:      | GRAP                                |
| Reactivity:  | Human, Mouse                        |
| Host:        | Rabbit                              |
| Clonality:   | Polyclonal                          |
| Conjugate:   | This GRAP antibody is un-conjugated |
| Application: | ELISA, Immunohistochemistry (IHC)   |

## Product Details

|                  |                               |
|------------------|-------------------------------|
| Immunogen:       | Full length fusion protein    |
| Isotype:         | IgG                           |
| Characteristics: | Polyclonal Antibody           |
| Purification:    | Antigen affinity purification |

## Target Details

|                   |   |
|-------------------|---|
| Target:           | GRAP  |
| Alternative Name: | GRAP ( <a href="#">GRAP Products</a> )  |
| Background:       | This gene encodes a member of the GRB2/Sem5/Drk family and functions as a cytoplasmic signaling protein which contains an SH2 domain flanked by two SH3 domains. The SH2 domain interacts with ligand-activated receptors for stem cell factor and erythropoietin, and facilitates the formation of a stable complex with the BCR-ABL oncoprotein. This protein also associates |

## Target Details

with the Ras guanine nucleotide exchange factor SOS1 (son of sevenless homolog 1) through its N-terminal SH3 domain. In general, it couples signals from receptor and cytoplasmic tyrosine kinases to the Ras signaling pathway.

UniProt: [Q13588](#)

## Application Details

Application Notes: IHC 1:30-1:150, ELISA 1:5000-1:10000

Restrictions: For Research Use only

## Handling

Format: Liquid

Concentration: 0.7 mg/mL

Buffer: PBS with 0.05 % Sodium azide and 40 % Glycerol, pH 7.4

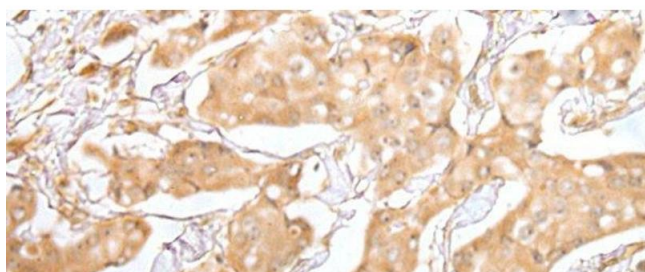
Preservative: Sodium azide

Precaution of Use: This product contains Sodium azide: a POISONOUS AND HAZARDOUS SUBSTANCE which should be handled by trained staff only.

Storage: -20 °C

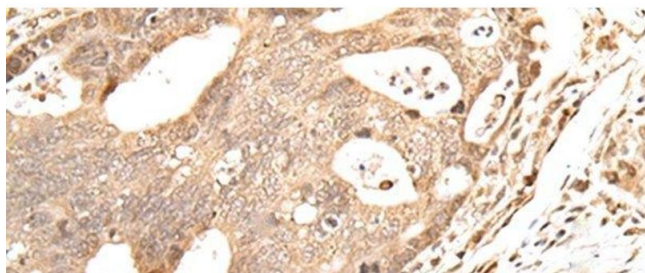
Storage Comment: Store at -20°C. Avoid freeze / thaw cycles.

## Images



### Immunohistochemistry (Paraffin-embedded Sections)

**Image 1.** Immunohistochemistry of paraffin-embedded Human breast cancer tissue using GRAP Polyclonal Antibody at dilution of 1:40(x200)



#### Immunohistochemistry (Paraffin-embedded Sections)

**Image 2.** Immunohistochemistry of paraffin-embedded Human gastric cancer tissue using GRAP Polyclonal Antibody at dilution of 1:40(x200)