

Datasheet for ABIN7245833

anti-EEF1E1 antibody**3** Images[Go to Product page](#)

Overview

Quantity:	200 µL
Target:	EEF1E1
Reactivity:	Human, Mouse
Host:	Rabbit
Clonality:	Polyclonal
Conjugate:	This EEF1E1 antibody is un-conjugated
Application:	Western Blotting (WB), ELISA, Immunohistochemistry (IHC)

Product Details

Immunogen:	Full length fusion protein
Isotype:	IgG
Characteristics:	Polyclonal Antibody
Purification:	Antigen affinity purification

Target Details

Target:	EEF1E1
Alternative Name:	EEF1E1 (EEF1E1 Products)
Background:	<p>This gene encodes a multifunctional protein that localizes to both the cytoplasm and nucleus. In the cytoplasm, the encoded protein is an auxiliary component of the macromolecular aminoacyl-tRNA synthase complex. However, its mouse homolog has been shown to translocate to the nucleus in response to DNA damage, and it plays a positive role in ATM/ATR-</p>

Target Details

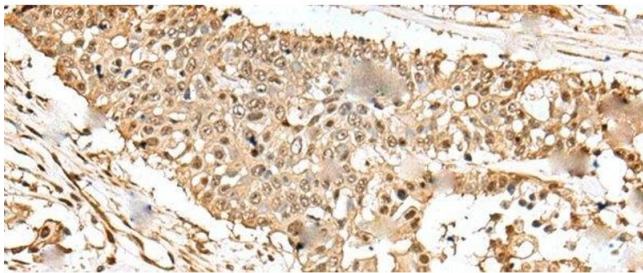
	mediated p53 activation. Alternative splicing results in multiple transcript variants. Read-through transcription also exists between this gene and the neighboring downstream MUTED (muted homolog) gene. An EEF1E1-related pseudogene has been identified on chromosome 2.
Molecular Weight:	Observed_MW: Refer to figures Calculated_MW: 20 kDa
UniProt:	O43324
Pathways:	Positive Regulation of Response to DNA Damage Stimulus

Application Details

Application Notes:	WB 1:500-1:2000, IHC 1:25-1:100, ELISA 1:5000-1:10000
Restrictions:	For Research Use only

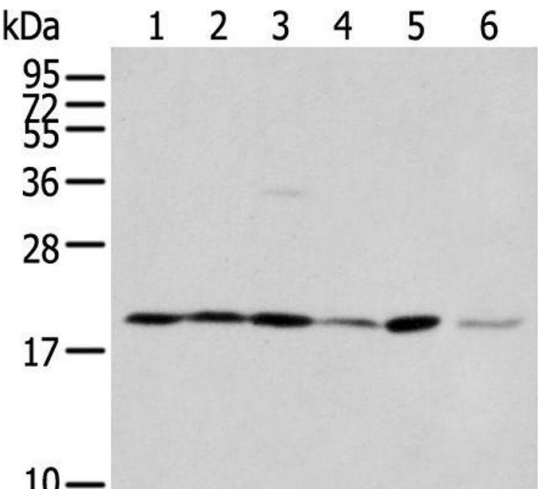
Handling

Format:	Liquid
Concentration:	1.1 mg/mL
Buffer:	PBS with 0.05 % Sodium azide and 40 % Glycerol, pH 7.4
Preservative:	Sodium azide
Precaution of Use:	This product contains Sodium azide: a POISONOUS AND HAZARDOUS SUBSTANCE which should be handled by trained staff only.
Storage:	-20 °C
Storage Comment:	Store at -20°C. Avoid freeze / thaw cycles.



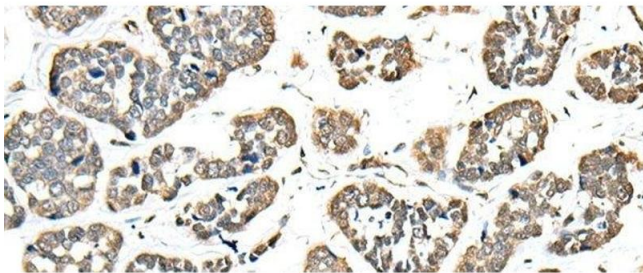
Immunohistochemistry (Paraffin-embedded Sections)

Image 1. Immunohistochemistry of paraffin-embedded Human colorectal cancer tissue using EEF1E1 Polyclonal Antibody at dilution of 1:35(x200)



Western Blotting

Image 2. Western blot analysis of 293T cell Hepg2 cell and A431 cell using EEF1E1 Polyclonal Antibody at dilution of 1:400



Immunohistochemistry (Paraffin-embedded Sections)

Image 3. Immunohistochemistry of paraffin-embedded Human esophagus cancer tissue using EEF1E1 Polyclonal Antibody at dilution of 1:35(x200)