

Datasheet for ABIN7245836

**anti-CSRP3 antibody****3** Images[Go to Product page](#)

## Overview

Quantity:	200 µL
Target:	CSRP3
Reactivity:	Human, Mouse, Rat
Host:	Rabbit
Clonality:	Polyclonal
Conjugate:	This CSRP3 antibody is un-conjugated
Application:	Western Blotting (WB), ELISA, Immunohistochemistry (IHC)

## Product Details

Immunogen:	Full length fusion protein
Isotype:	IgG
Characteristics:	Polyclonal Antibody
Purification:	Antigen affinity purification

## Target Details

Target:	CSRP3
Alternative Name:	CSRP3 ( <a href="#">CSRP3 Products</a> )
Background:	This gene encodes a member of the CSRP family of LIM domain proteins, which may be involved in regulatory processes important for development and cellular differentiation. The LIM/double zinc-finger motif found in this protein is found in a group of proteins with critical functions in gene regulation, cell growth, and somatic differentiation. Mutations in this gene are

## Target Details

thought to cause heritable forms of hypertrophic cardiomyopathy (HCM) and dilated cardiomyopathy (DCM) in humans. Alternatively spliced transcript variants with different 5' UTR, but encoding the same protein, have been found for this gene.

Molecular Weight: Observed\_MW: Refer to figures  
Calculated\_MW: 21 kDa

UniProt: [P50461](#)

## Application Details

Application Notes: WB 1:500-1:2000, IHC 1:30-1:150, ELISA 1:5000-1:10000

Restrictions: For Research Use only

## Handling

Format: Liquid

Concentration: 1.3 mg/mL

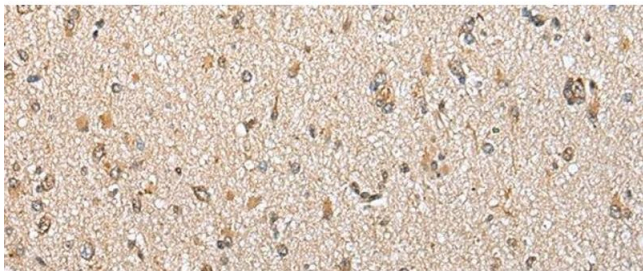
Buffer: PBS with 0.05 % Sodium azide and 40 % Glycerol, pH 7.4

Preservative: Sodium azide

Precaution of Use: This product contains Sodium azide: a POISONOUS AND HAZARDOUS SUBSTANCE which should be handled by trained staff only.

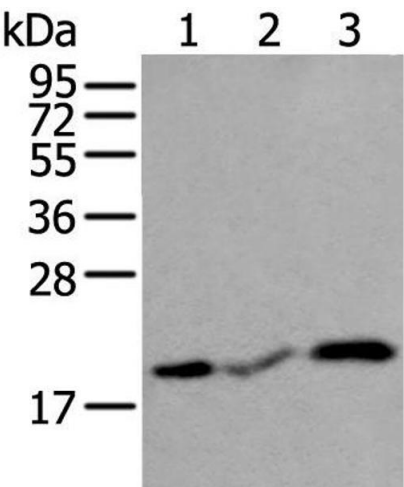
Storage: -20 °C

Storage Comment: Store at -20°C. Avoid freeze / thaw cycles.



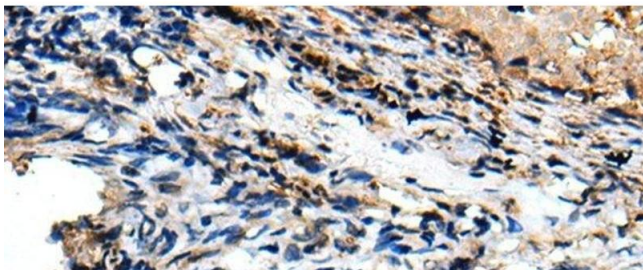
**Immunohistochemistry (Paraffin-embedded Sections)**

**Image 1.** Immunohistochemistry of paraffin-embedded Human brain tissue using CSRP3 Polyclonal Antibody at dilution of 1:40(x200)



**Western Blotting**

**Image 2.** Western blot analysis of Human heart tissue Rat heart tissue and Mouse heart tissue lysates using CSRP3 Polyclonal Antibody at dilution of 1:400



**Immunohistochemistry (Paraffin-embedded Sections)**

**Image 3.** Immunohistochemistry of paraffin-embedded Human lung cancer tissue using CSRP3 Polyclonal Antibody at dilution of 1:40(x200)