

Datasheet for ABIN7245839
anti-ABHD14B antibody

3 Images

[Go to Product page](#)

Overview

Quantity:	200 µL
Target:	ABHD14B
Reactivity:	Human, Rat, Mouse
Host:	Rabbit
Clonality:	Polyclonal
Conjugate:	This ABHD14B antibody is un-conjugated
Application:	ELISA, Immunohistochemistry (IHC), Western Blotting (WB)

Product Details

Immunogen:	Full length fusion protein
Isotype:	IgG
Characteristics:	Polyclonal Antibody
Purification:	Antigen affinity purification

Target Details

Target:	ABHD14B
Alternative Name:	ABHD14B (ABHD14B Products)
Background:	ABHD14B is a 210 amino acid protein that localizes to both the cytoplasm and the nucleus where it exists as two alternatively spliced isoforms. Has hydrolase activity towards p-nitrophenyl butyrate (in vitro). May activate transcription.

Target Details

Molecular Weight: Observed_MW: Refer to figures
Calculated_MW: 22 kDa

UniProt: [Q96IU4](#)

Application Details

Application Notes: WB 1:500-1:2000, IHC 1:25-1:100, ELISA 1:5000-1:10000

Restrictions: For Research Use only

Handling

Format: Liquid

Concentration: 1 mg/mL

Buffer: PBS with 0.05 % Sodium azide and 40 % Glycerol, pH 7.4

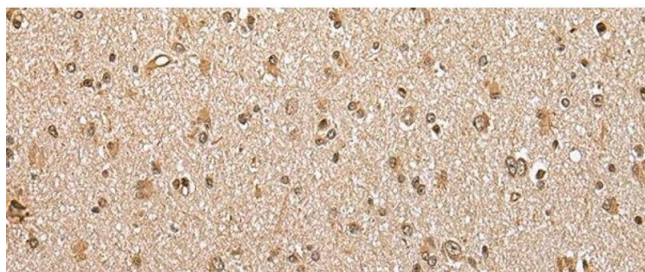
Preservative: Sodium azide

Precaution of Use: This product contains Sodium azide: a POISONOUS AND HAZARDOUS SUBSTANCE which should be handled by trained staff only.

Storage: -20 °C

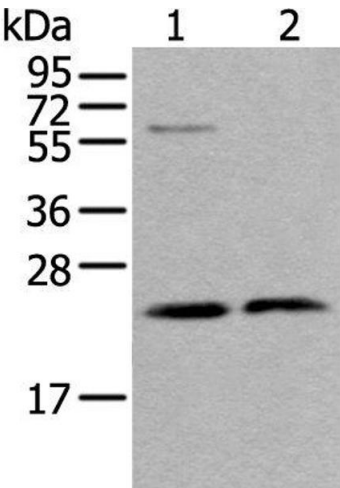
Storage Comment: Store at -20°C. Avoid freeze / thaw cycles.

Images



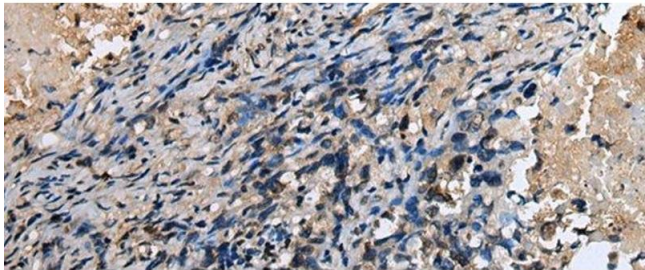
Immunohistochemistry (Paraffin-embedded Sections)

Image 1. Immunohistochemistry of paraffin-embedded Human brain tissue using ABHD14B Polyclonal Antibody at dilution of 1:30(x200)



Western Blotting

Image 2. Western blot analysis of LO2 cell and Human testis tissue lysates using ABHD14B Polyclonal Antibody at dilution of 1:350



Immunohistochemistry (Paraffin-embedded Sections)

Image 3. Immunohistochemistry of paraffin-embedded Human lung cancer tissue using ABHD14B Polyclonal Antibody at dilution of 1:30(x200)