

Datasheet for ABIN7245845  
**anti-MOBKL1A antibody**

## 3 Images

[Go to Product page](#)

## Overview

Quantity:	200 µL
Target:	MOBKL1A (MOB1B)
Reactivity:	Human, Mouse
Host:	Rabbit
Clonality:	Polyclonal
Conjugate:	This MOBKL1A antibody is un-conjugated
Application:	ELISA, Western Blotting (WB), Immunohistochemistry (IHC)

## Product Details

Immunogen:	Full length fusion protein
Isotype:	IgG
Characteristics:	Polyclonal Antibody
Purification:	Antigen affinity purification

## Target Details

Target:	MOBKL1A (MOB1B)
Alternative Name:	MOB1B ( <a href="#">MOB1B Products</a> )
Background:	The protein encoded by this gene is similar to the yeast Mob1 protein. Yeast Mob1 binds Mps1p, a protein kinase essential for spindle pole body duplication and mitotic checkpoint regulation. Three transcript variants encoding different isoforms have been found for this gene. Activator of LATS1/2 in the Hippo signaling pathway which plays a pivotal role in organ

## Target Details

size control and tumor suppression by restricting proliferation and promoting apoptosis. The core of this pathway is composed of a kinase cascade wherein STK3/MST2 and STK4/MST1, in complex with its regulatory protein SAV1, phosphorylates and activates LATS1/2 in complex with its regulatory protein MOB1, which in turn phosphorylates and inactivates YAP1 oncoprotein and WWTR1/TAZ.

Molecular Weight: Observed\_MW: Refer to figures  
Calculated\_MW: 25 kDa

UniProt: [Q7L9L4](#)

## Application Details

Application Notes: WB 1:500-1:2000, IHC 1:25-1:100, ELISA 1:5000-1:10000

Restrictions: For Research Use only

## Handling

Format: Liquid

Concentration: 0.8 mg/mL

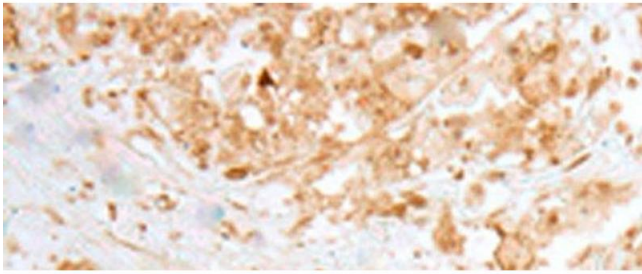
Buffer: PBS with 0.05 % Sodium azide and 40 % Glycerol, pH 7.4

Preservative: Sodium azide

Precaution of Use: This product contains Sodium azide: a POISONOUS AND HAZARDOUS SUBSTANCE which should be handled by trained staff only.

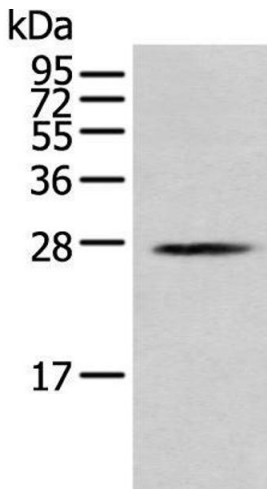
Storage: -20 °C

Storage Comment: Store at -20°C. Avoid freeze / thaw cycles.



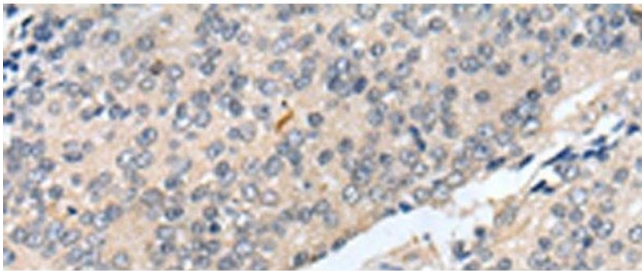
**Immunohistochemistry (Paraffin-embedded Sections)**

**Image 1.** Immunohistochemistry of paraffin-embedded Human colorectal cancer tissue using MOB1B Polyclonal Antibody at dilution of 1:25(x200)



**Western Blotting**

**Image 2.** Western blot analysis of K562 cell using MOB1B Polyclonal Antibody at dilution of 1:250



**Immunohistochemistry (Paraffin-embedded Sections)**

**Image 3.** Immunohistochemistry of paraffin-embedded Human prostate cancer tissue using MOB1B Polyclonal Antibody at dilution of 1:25(x200)