

Datasheet for ABIN7245851

anti-FKBP7 antibody**2** Images[Go to Product page](#)

Overview

Quantity:	200 µL
Target:	FKBP7
Reactivity:	Human, Mouse
Host:	Rabbit
Clonality:	Polyclonal
Conjugate:	This FKBP7 antibody is un-conjugated
Application:	Western Blotting (WB), Immunohistochemistry (IHC), ELISA

Product Details

Immunogen:	Fusion protein of human FKBP7
Isotype:	IgG
Characteristics:	Polyclonal Antibody
Purification:	Antigen affinity purification

Target Details

Target:	FKBP7
Alternative Name:	FKBP7 (FKBP7 Products)
Background:	The protein encoded by this gene belongs to the FKBP-type peptidyl-prolyl cis/trans isomerase (PPIase) family. Members of this family exhibit PPIase activity and function as molecular chaperones. A similar protein in mouse is located in the endoplasmic reticulum and binds calcium.

Target Details

Molecular Weight:	Observed_MW: Refer to figures Calculated_MW: 30 kDa
UniProt:	Q9Y680
Pathways:	SARS-CoV-2 Protein Interactome

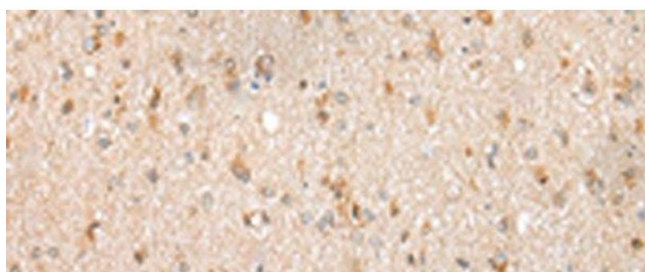
Application Details

Application Notes:	WB 1:500-1:2000, IHC 1:30-1:150, ELISA 1:5000-1:10000
Restrictions:	For Research Use only

Handling

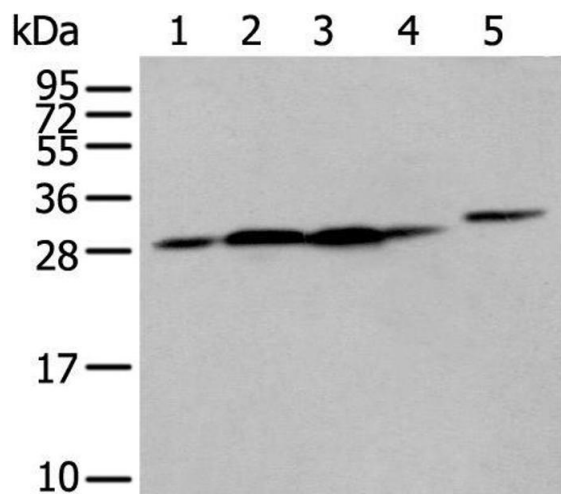
Format:	Liquid
Concentration:	0.9 mg/mL
Buffer:	PBS with 0.05 % Sodium azide and 40 % Glycerol, pH 7.4
Preservative:	Sodium azide
Precaution of Use:	This product contains Sodium azide: a POISONOUS AND HAZARDOUS SUBSTANCE which should be handled by trained staff only.
Storage:	-20 °C
Storage Comment:	Store at -20°C. Avoid freeze / thaw cycles.

Images



Immunohistochemistry (Paraffin-embedded Sections)

Image 1. Immunohistochemistry of paraffin-embedded Human brain tissue using FKBP7 Polyclonal Antibody at dilution of 1:40(x200)



Western Blotting

Image 2. Western blot analysis of 293T cell Human fetal liver tissue A549 and Hepg2 cell using FKBP7 Polyclonal Antibody at dilution of 1:400