

Datasheet for ABIN7245857

anti-MOBKL3 antibody**3** Images[Go to Product page](#)

Overview

Quantity:	200 µL
Target:	MOBKL3
Reactivity:	Human, Mouse, Rat
Host:	Rabbit
Clonality:	Polyclonal
Conjugate:	This MOBKL3 antibody is un-conjugated
Application:	Western Blotting (WB), ELISA, Immunohistochemistry (IHC)

Product Details

Immunogen:	Full length fusion protein
Isotype:	IgG
Characteristics:	Polyclonal Antibody
Purification:	Antigen affinity purification

Target Details

Target:	MOBKL3
Alternative Name:	MOB4 (MOBKL3 Products)
Background:	This gene was identified based on its similarity with the mouse counterpart. Studies of the mouse counterpart suggest that the expression of this gene may be regulated during oocyte maturation and preimplantation following zygotic gene activation. Alternatively spliced transcript variants encoding distinct isoforms have been observed. Naturally occurring read-

Target Details

through transcription occurs between this locus and the neighboring locus HSPE1.

Molecular Weight: Observed_MW: Refer to figures
Calculated_MW: 26 kDa

UniProt: [Q9Y3A3](#)

Application Details

Application Notes: WB 1:500-1:2000, IHC 1:25-1:100, ELISA 1:5000-1:10000

Restrictions: For Research Use only

Handling

Format: Liquid

Concentration: 0.7 mg/mL

Buffer: PBS with 0.05 % Sodium azide and 40 % Glycerol, pH 7.4

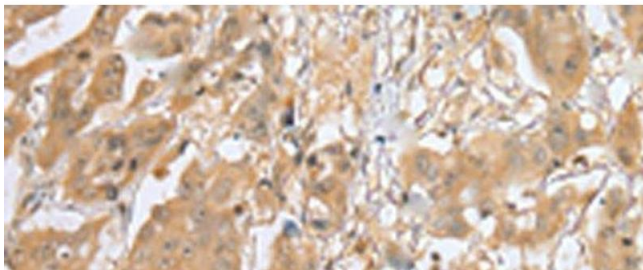
Preservative: Sodium azide

Precaution of Use: This product contains Sodium azide: a POISONOUS AND HAZARDOUS SUBSTANCE which should be handled by trained staff only.

Storage: -20 °C

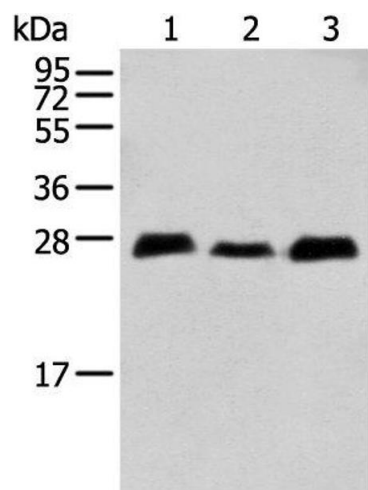
Storage Comment: Store at -20°C. Avoid freeze / thaw cycles.

Images



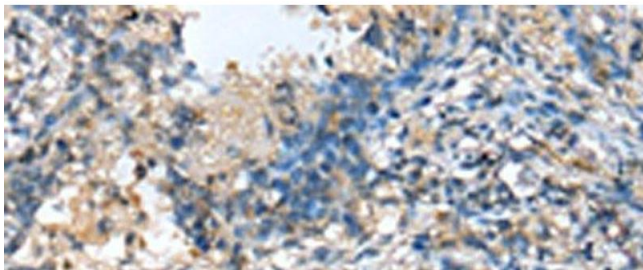
Immunohistochemistry (Paraffin-embedded Sections)

Image 1. Immunohistochemistry of paraffin-embedded Human breast cancer tissue using MOB4 Polyclonal Antibody at dilution of 1:25(x200)



Western Blotting

Image 2. Western blot analysis of Human fetal brain tissue Human cerebrum tissue Mouse brain tissue using MOB4 Polyclonal Antibody at dilution of 1:400



Immunohistochemistry (Paraffin-embedded Sections)

Image 3. Immunohistochemistry of paraffin-embedded Human lung cancer tissue using MOB4 Polyclonal Antibody at dilution of 1:25(x200)