

Datasheet for ABIN7245875

anti-14-3-3 sigma/SFN antibody**2** Images[Go to Product page](#)

Overview

Quantity:	200 µL
Target:	14-3-3 sigma/SFN (SFN)
Reactivity:	Human, Mouse
Host:	Rabbit
Clonality:	Polyclonal
Conjugate:	This 14-3-3 sigma/SFN antibody is un-conjugated
Application:	Western Blotting (WB), Immunohistochemistry (IHC), ELISA

Product Details

Immunogen:	Full length fusion protein
Isotype:	IgG
Characteristics:	Polyclonal Antibody
Purification:	Antigen affinity purification

Target Details

Target:	14-3-3 sigma/SFN (SFN)
Alternative Name:	SFN (SFN Products)
Background:	14-3-3 sigma is a member 14-3-3 family of highly conserved proteins participating in diverse cellular processes including cell cycle progression. It is exclusively present in various epithelial cells, and alternatively named as human epithelial marker (HEM), or stratifin. Alteration of its expression has been linked to cancer.

Target Details

Molecular Weight:	Observed_MW: Refer to figures
	Calculated_MW: 28 kDa
UniProt:	P31947
Pathways:	p53 Signaling , Myometrial Relaxation and Contraction

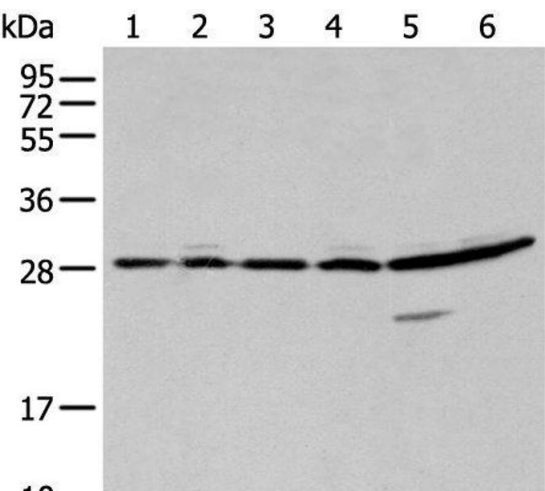
Application Details

Application Notes:	WB 1:500-1:2000, IHC 1:25-1:100, ELISA 1:5000-1:10000
Restrictions:	For Research Use only

Handling

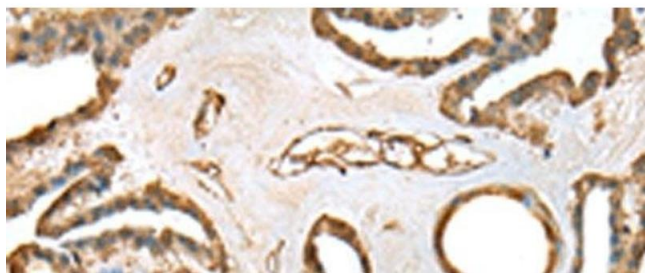
Format:	Liquid
Concentration:	0.5 mg/mL
Buffer:	PBS with 0.05 % Sodium azide and 40 % Glycerol, pH 7.4
Preservative:	Sodium azide
Precaution of Use:	This product contains Sodium azide: a POISONOUS AND HAZARDOUS SUBSTANCE which should be handled by trained staff only.
Storage:	-20 °C
Storage Comment:	Store at -20°C. Avoid freeze / thaw cycles.

Images



Western Blotting

Image 1. Western blot analysis of 293T A549 and Hela cell using SFN Polyclonal Antibody at dilution of 1:250



Immunohistochemistry (Paraffin-embedded Sections)

Image 2. Immunohistochemistry of paraffin-embedded Human thyroid cancer tissue using SFN Polyclonal Antibody at dilution of 1:25(x200)