

Datasheet for ABIN7245911
anti-ZNF354A antibody

2 Images

[Go to Product page](#)

Overview

Quantity:	200 µL
Target:	ZNF354A
Reactivity:	Human, Mouse, Rat
Host:	Rabbit
Clonality:	Polyclonal
Conjugate:	This ZNF354A antibody is un-conjugated
Application:	ELISA, Immunohistochemistry (IHC)

Product Details

Immunogen:	Fusion protein of human ZNF354A
Isotype:	IgG
Characteristics:	Polyclonal Antibody
Purification:	Antigen affinity purification

Target Details

Target:	ZNF354A
Alternative Name:	ZNF354A (ZNF354A Products)
Background:	ZNF354A, also called EZNF, KID-1 or TCF17, belongs to the Krüppel C2H2-type zinc-finger family of proteins that contain KRAB domains and act as transcriptional regulators. Expressed primarily in the adult kidney, ZNF354A is a transcriptional repressor that plays a role in late renal development and is suppressed after renal ischemia. The N-terminus of ZNF354A

Target Details

contains the KRAB domain which confers transcriptional repressor activity, while the C-terminus contains multiple Cys2His2-zinc fingers. ZNF354A is located in the nucleolus and is thought to specifically influence development of the proximal tubule by shutting off dispensable or inhibitory genes. Reduced ZNF354A expression prevents proper cell differentiation and may, therefore, be implicated in renal carcinoma.

UniProt: [O60765](#)

Pathways: [Sensory Perception of Sound](#)

Application Details

Application Notes: IHC 1:30-1:150, ELISA 1:5000-1:10000

Restrictions: For Research Use only

Handling

Format: Liquid

Concentration: 0.5 mg/mL

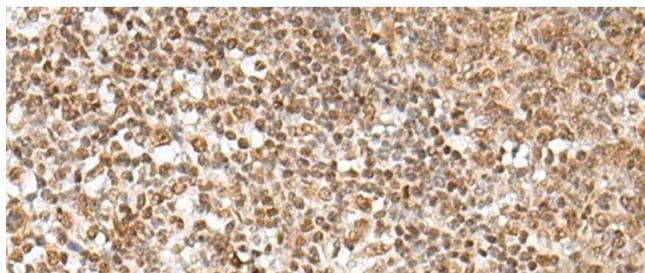
Buffer: PBS with 0.05 % Sodium azide and 40 % Glycerol, pH 7.4

Preservative: Sodium azide

Precaution of Use: This product contains Sodium azide: a POISONOUS AND HAZARDOUS SUBSTANCE which should be handled by trained staff only.

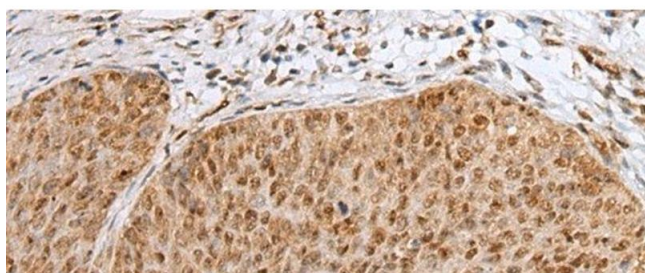
Storage: -20 °C

Storage Comment: Store at -20°C. Avoid freeze / thaw cycles.



Immunohistochemistry (Paraffin-embedded Sections)

Image 1. Immunohistochemistry of paraffin-embedded Human tonsil tissue using ZNF354A Polyclonal Antibody at dilution of 1:40(x200)



Immunohistochemistry (Paraffin-embedded Sections)

Image 2. Immunohistochemistry of paraffin-embedded Human cervical cancer tissue using ZNF354A Polyclonal Antibody at dilution of 1:40(x200)