

Datasheet for ABIN7245920

anti-ZBPB antibody

3 Images

[Go to Product page](#)

Overview

Quantity:	200 µL
Target:	ZBPB
Reactivity:	Human, Mouse
Host:	Rabbit
Clonality:	Polyclonal
Conjugate:	This ZBPB antibody is un-conjugated
Application:	ELISA, Western Blotting (WB), Immunohistochemistry (IHC)

Product Details

Immunogen:	Fusion protein of human ZBPB
Isotype:	IgG
Characteristics:	Polyclonal Antibody
Purification:	Antigen affinity purification

Target Details

Target:	ZBPB
Alternative Name:	ZBPB (ZBPB Products)
Background:	ZBPB is one of several proteins that are thought to participate in secondary binding between acrosome-reacted sperm and the egg-specific extracellular matrix, the zona pellucida (McLeskey et al., 1998 [PubMed 9378618]). May be implicated in gamete interaction during fertilization.

Target Details

Molecular Weight: Observed_MW: Refer to figures
Calculated_MW: 40 kDa

UniProt: [Q9BS86](#)

Application Details

Application Notes: WB 1:500-1:2000, IHC 1:25-1:100, ELISA 1:5000-1:10000

Restrictions: For Research Use only

Handling

Format: Liquid

Concentration: 0.5 mg/mL

Buffer: PBS with 0.05 % Sodium azide and 40 % Glycerol, pH 7.4

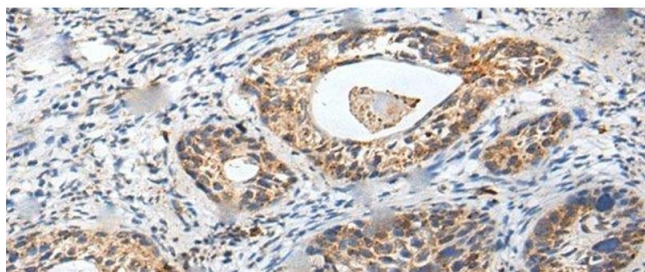
Preservative: Sodium azide

Precaution of Use: This product contains Sodium azide: a POISONOUS AND HAZARDOUS SUBSTANCE which should be handled by trained staff only.

Storage: -20 °C

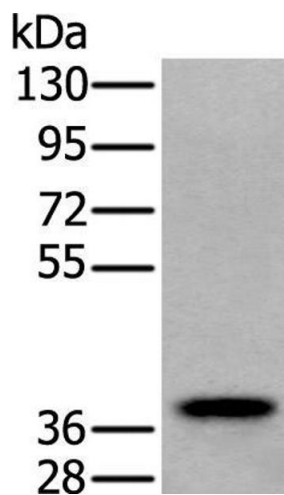
Storage Comment: Store at -20°C. Avoid freeze / thaw cycles.

Images



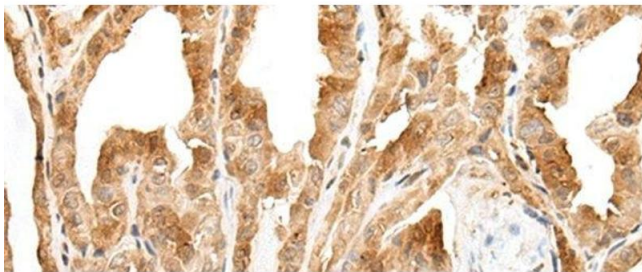
Immunohistochemistry (Paraffin-embedded Sections)

Image 1. Immunohistochemistry of paraffin-embedded Human cervical cancer tissue using ZBPB Polyclonal Antibody at dilution of 1:30(x200)



Western Blotting

Image 2. Western blot analysis of Human testis tissue lysate using ZPBP Polyclonal Antibody at dilution of 1:250



Immunohistochemistry (Paraffin-embedded Sections)

Image 3. Immunohistochemistry of paraffin-embedded Human thyroid cancer tissue using ZPBP Polyclonal Antibody at dilution of 1:30(x200)