



[Go to Product page](#)

Datasheet for ABIN7245932

anti-WDFY4 antibody

1 Image

Overview

Quantity:	200 µL
Target:	WDFY4
Reactivity:	Human
Host:	Rabbit
Clonality:	Polyclonal
Conjugate:	This WDFY4 antibody is un-conjugated
Application:	ELISA, Immunohistochemistry (IHC)

Product Details

Immunogen:	Fusion protein of human WDFY4
Isotype:	IgG
Characteristics:	Polyclonal Antibody
Purification:	Antigen affinity purification

Target Details

Target:	WDFY4
Alternative Name:	WDFY4 (WDFY4 Products)
Background:	WDFY4 is predominantly expressed in the immune tissues. The function of WDFY4 is not well known,
UniProt:	Q6ZS81

Application Details

Application Notes: IHC 1:40-1:200, ELISA 1:5000-1:10000

Restrictions: For Research Use only

Handling

Format: Liquid

Concentration: 0.6 mg/mL

Buffer: PBS with 0.05 % Sodium azide and 40 % Glycerol, pH 7.4

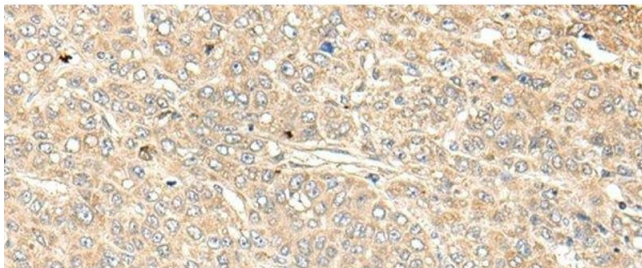
Preservative: Sodium azide

Precaution of Use: This product contains Sodium azide: a POISONOUS AND HAZARDOUS SUBSTANCE which should be handled by trained staff only.

Storage: -20 °C

Storage Comment: Store at -20°C. Avoid freeze / thaw cycles.

Images



Immunohistochemistry (Paraffin-embedded Sections)

Image 1. Immunohistochemistry of paraffin-embedded Human liver cancer tissue using WDFY4 Polyclonal Antibody at dilution of 1:50(x200)