

Datasheet for ABIN7245992

anti-ASS1 antibody**2** Images[Go to Product page](#)

Overview

Quantity:	200 µL
Target:	ASS1
Reactivity:	Human, Mouse, Rat
Host:	Rabbit
Clonality:	Polyclonal
Conjugate:	This ASS1 antibody is un-conjugated
Application:	Western Blotting (WB), ELISA, Immunohistochemistry (IHC)

Product Details

Immunogen:	Fusion protein of human ASS1
Isotype:	IgG
Characteristics:	Polyclonal Antibody
Purification:	Antigen affinity purification

Target Details

Target:	ASS1
Alternative Name:	ASS1 (ASS1 Products)
Background:	ASS1 is a rate-limiting enzyme in the urea cycle. Citrullinemia type I is an autosomal recessive disorder that is caused by a deficiency of the urea cycle enzyme argininosuccinate synthetase (ASS1). Deficiency of ASS1 shows various clinical manifestations encompassing severely affected patients with fatal neonatal hyperammonemia as well as asymptomatic individuals

Target Details

with only a biochemical phenotype.

Molecular Weight: Observed_MW: Refer to figures
Calculated_MW: 47 kDa

UniProt: [P00966](#)

Pathways: [Response to Growth Hormone Stimulus](#), [Cellular Response to Molecule of Bacterial Origin](#)

Application Details

Application Notes: WB 1:500-1:2000, IHC 1:25-1:100, ELISA 1:5000-1:10000

Restrictions: For Research Use only

Handling

Format: Liquid

Concentration: 0.5 mg/mL

Buffer: PBS with 0.05 % Sodium azide and 40 % Glycerol, pH 7.4

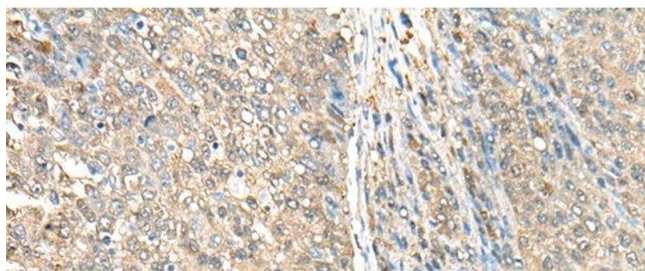
Preservative: Sodium azide

Precaution of Use: This product contains Sodium azide: a POISONOUS AND HAZARDOUS SUBSTANCE which should be handled by trained staff only.

Storage: -20 °C

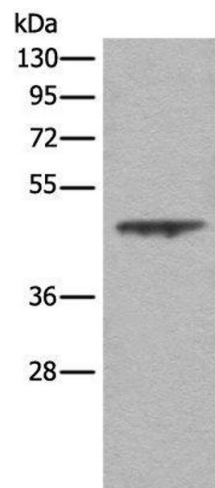
Storage Comment: Store at -20°C. Avoid freeze / thaw cycles.

Images



Immunohistochemistry (Paraffin-embedded Sections)

Image 1. Immunohistochemistry of paraffin-embedded Human liver cancer tissue using ASS1 Polyclonal Antibody at dilution of 1:35(x200)



Western Blotting

Image 2. Western blot analysis of A431 cell lysate using ASS1 Polyclonal Antibody at dilution of 1:350