

Datasheet for ABIN7246004

anti-ATL3 antibody**2** Images[Go to Product page](#)

Overview

Quantity:	200 µL
Target:	ATL3
Reactivity:	Human, Mouse, Rat
Host:	Rabbit
Clonality:	Polyclonal
Conjugate:	This ATL3 antibody is un-conjugated
Application:	Western Blotting (WB), ELISA, Immunohistochemistry (IHC)

Product Details

Immunogen:	Fusion protein of human ATL3
Isotype:	IgG
Characteristics:	Polyclonal Antibody
Purification:	Antigen affinity purification

Target Details

Target:	ATL3
Alternative Name:	ATL3 (ATL3 Products)
Background:	This gene encodes a member of a family of dynamin-like, integral membrane GTPases. The encoded protein is required for the proper formation of the network of interconnected tubules of the endoplasmic reticulum. Mutations in this gene may be associated with hereditary sensory neuropathy type IF. Alternatively spliced transcript variants that encode distinct

Target Details

isoforms have been described.

Molecular Weight: Observed_MW: Refer to figures
Calculated_MW: 61 kDa

UniProt: [Q6DD88](#)

Application Details

Application Notes: WB 1:500-1:2000, IHC 1:50-1:300, ELISA 1:5000-1:10000

Restrictions: For Research Use only

Handling

Format: Liquid

Concentration: 1.3 mg/mL

Buffer: PBS with 0.05 % Sodium azide and 40 % Glycerol, pH 7.4

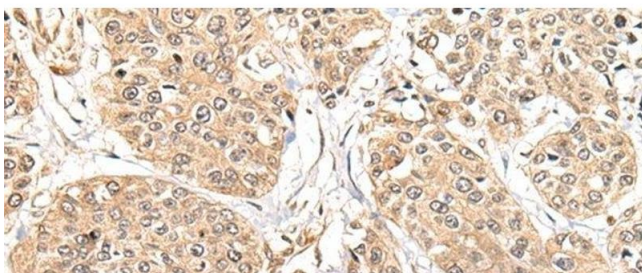
Preservative: Sodium azide

Precaution of Use: This product contains Sodium azide: a POISONOUS AND HAZARDOUS SUBSTANCE which should be handled by trained staff only.

Storage: -20 °C

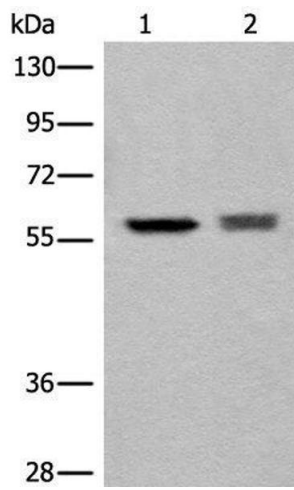
Storage Comment: Store at -20°C. Avoid freeze / thaw cycles.

Images



Immunohistochemistry (Paraffin-embedded Sections)

Image 1. Immunohistochemistry of paraffin-embedded Human prost at e cancer tissue using ATL3 Polyclonal Antibody at dilution of 1:85(x200)



Western Blotting

Image 2. Western blot analysis of EPG2 and Jurkat cell lysates using ATL3 Polyclonal Antibody at dilution of 1:800