



[Go to Product page](#)

Datasheet for ABIN7246016

## anti-BBOX1 antibody

### 2 Images

#### Overview

Quantity:	200 µL
Target:	BBOX1
Reactivity:	Human, Mouse, Rat
Host:	Rabbit
Clonality:	Polyclonal
Conjugate:	This BBOX1 antibody is un-conjugated
Application:	Western Blotting (WB), ELISA, Immunohistochemistry (IHC)

#### Product Details

Immunogen:	Fusion protein of human BBOX1
Isotype:	IgG
Characteristics:	Polyclonal Antibody
Purification:	Antigen affinity purification

#### Target Details

Target:	BBOX1
Alternative Name:	BBOX1 ( <a href="#">BBOX1 Products</a> )
Background:	This gene encodes gamma butyrobetaine hydroxylase which catalyzes the formation of L-carnitine from gamma-butyrobetaine, the last step in the L-carnitine biosynthetic pathway. Carnitine is essential for the transport of activated fatty acids across the mitochondrial membrane during mitochondrial beta-oxidation.

## Target Details

Molecular Weight: Observed\_MW: Refer to figures  
Calculated\_MW: 45 kDa

UniProt: [O75936](#)

## Application Details

Application Notes: WB 1:500-1:2000, IHC 1:30-1:150, ELISA 1:5000-1:10000

Restrictions: For Research Use only

## Handling

Format: Liquid

Concentration: 0.8 mg/mL

Buffer: PBS with 0.05 % Sodium azide and 40 % Glycerol, pH 7.4

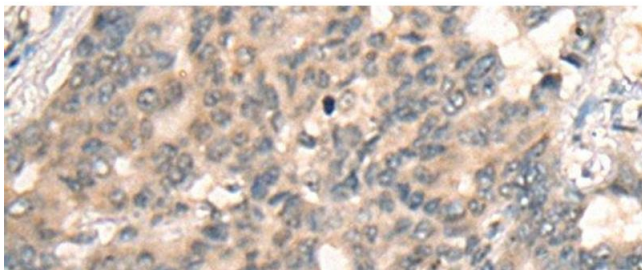
Preservative: Sodium azide

Precaution of Use: This product contains Sodium azide: a POISONOUS AND HAZARDOUS SUBSTANCE which should be handled by trained staff only.

Storage: -20 °C

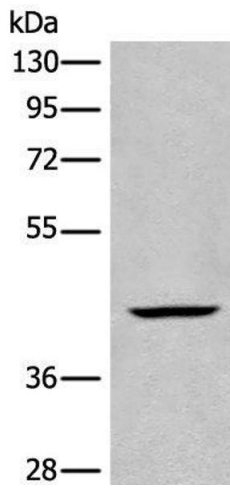
Storage Comment: Store at -20°C. Avoid freeze / thaw cycles.

## Images



### Immunohistochemistry (Paraffin-embedded Sections)

**Image 1.** Immunohistochemistry of paraffin-embedded Human liver cancer tissue using BBOX1 Polyclonal Antibody at dilution of 1:45(x200)



### Western Blotting

**Image 2.** Western blot analysis of Human kidney tissue lysate using BBOX1 Polyclonal Antibody at dilution of 1:650