

Datasheet for ABIN7246019

anti-BDH2 antibody**2** Images[Go to Product page](#)

Overview

Quantity:	200 µL
Target:	BDH2
Reactivity:	Human, Mouse, Rat
Host:	Rabbit
Clonality:	Polyclonal
Conjugate:	This BDH2 antibody is un-conjugated
Application:	ELISA, Western Blotting (WB), Immunohistochemistry (IHC)

Product Details

Immunogen:	Full length fusion protein
Isotype:	IgG
Characteristics:	Polyclonal Antibody
Purification:	Antigen affinity purification

Target Details

Target:	BDH2
Alternative Name:	BDH2 (BDH2 Products)
Background:	Dehydrogenase that mediates the formation of 2,5-dihydroxybenzoic acid (2,5-DHBA), a siderophore that shares structural similarities with bacterial enterobactin and associates with LCN2, thereby playing a key role in iron homeostasis and transport. Also acts as a 3-hydroxybutyrate dehydrogenase (By similarity).

Target Details

Molecular Weight:	Observed_MW: Refer to figures Calculated_MW: 27 kDa
UniProt:	Q9BUT1
Pathways:	Transition Metal Ion Homeostasis, Monocarboxylic Acid Catabolic Process

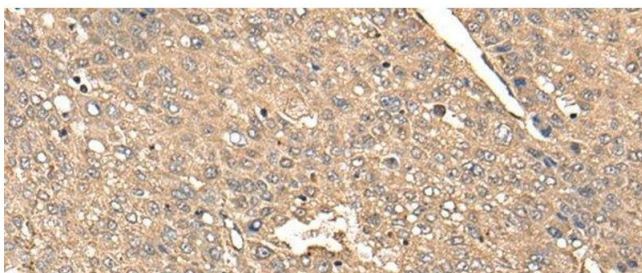
Application Details

Application Notes:	WB 1:500-1:2000, IHC 1:50-1:300, ELISA 1:5000-1:10000
Restrictions:	For Research Use only

Handling

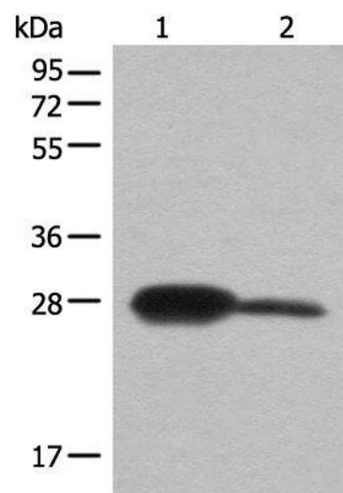
Format:	Liquid
Concentration:	0.6 mg/mL
Buffer:	PBS with 0.05 % Sodium azide and 40 % Glycerol, pH 7.4
Preservative:	Sodium azide
Precaution of Use:	This product contains Sodium azide: a POISONOUS AND HAZARDOUS SUBSTANCE which should be handled by trained staff only.
Storage:	-20 °C
Storage Comment:	Store at -20°C. Avoid freeze / thaw cycles.

Images



Immunohistochemistry (Paraffin-embedded Sections)

Image 1. Immunohistochemistry of paraffin-embedded Human liver cancer tissue using BDH2 Polyclonal Antibody at dilution of 1:65(x200)



Western Blotting

Image 2. Western blot analysis of Mouse kidney tissue and A172 cell lysates using BDH2 Polyclonal Antibody at dilution of 1:600