

Datasheet for ABIN7246049

**anti-NCAPH antibody****3** Images[Go to Product page](#)

## Overview

Quantity:	200 µL
Target:	NCAPH
Reactivity:	Human, Mouse
Host:	Rabbit
Clonality:	Polyclonal
Conjugate:	This NCAPH antibody is un-conjugated
Application:	Western Blotting (WB), ELISA, Immunohistochemistry (IHC)

## Product Details

Immunogen:	Fusion protein of human NCAPH
Isotype:	IgG
Characteristics:	Polyclonal Antibody
Purification:	Antigen affinity purification

## Target Details

Target:	NCAPH
Alternative Name:	NCAPH ( <a href="#">NCAPH Products</a> )
Background:	This gene encodes a member of the barr gene family and a regulatory subunit of the condensin complex. This complex is required for the conversion of interphase chromatin into condensed chromosomes. The protein encoded by this gene is associated with mitotic chromosomes, except during the early phase of chromosome condensation. During interphase, the protein has

## Target Details

a distinct punctate nucleolar localization. Alternatively spliced transcript variants encoding different proteins have been described.

Molecular Weight: Observed\_MW: Refer to figures  
Calculated\_MW: 83 kDa

UniProt: [Q15003](#)

## Application Details

Application Notes: WB 1:500-1:2000, IHC 1:30-1:150, ELISA 1:5000-1:10000

Restrictions: For Research Use only

## Handling

Format: Liquid

Concentration: 0.7 mg/mL

Buffer: PBS with 0.05 % Sodium azide and 40 % Glycerol, pH 7.4

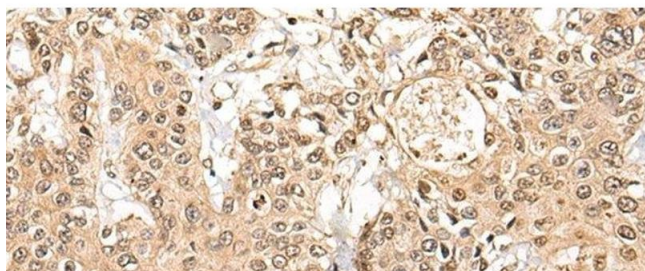
Preservative: Sodium azide

Precaution of Use: This product contains Sodium azide: a POISONOUS AND HAZARDOUS SUBSTANCE which should be handled by trained staff only.

Storage: -20 °C

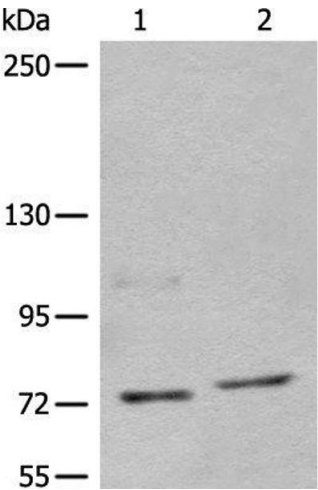
Storage Comment: Store at -20°C. Avoid freeze / thaw cycles.

## Images



### Immunohistochemistry (Paraffin-embedded Sections)

**Image 1.** Immunohistochemistry of paraffin-embedded Human prostate cancer tissue using NCAPH Polyclonal Antibody at dilution of 1:45(x200)



**Western Blotting**

**Image 2.** Western blot analysis of 562 and Jurkat cell lysates using NCAPH Polyclonal Antibody at dilution of 1:450

**Immunohistochemistry (Paraffin-embedded Sections)**

**Image 3.** Immunohistochemistry of paraffin-embedded Human thyroid cancer tissue using NCAPH Polyclonal Antibody at dilution of 1:45(x200)

