

Datasheet for ABIN7246052

anti-BUD31 antibody

3 Images

[Go to Product page](#)

Overview

Quantity:	200 µL
Target:	BUD31
Reactivity:	Human, Rat, Mouse
Host:	Rabbit
Clonality:	Polyclonal
Conjugate:	This BUD31 antibody is un-conjugated
Application:	Western Blotting (WB), ELISA, Immunohistochemistry (IHC)

Product Details

Immunogen:	Full length fusion protein
Isotype:	IgG
Characteristics:	Polyclonal Antibody
Purification:	Antigen affinity purification

Target Details

Target:	BUD31
Alternative Name:	BUD31 (BUD31 Products)
Background:	BUD31 (Protein G10 homolog, EDG-2) is a 144 amino acid protein encoded by the human gene BUD31. BUD31 is a nuclear protein that belongs to the BUD31 (G10) family. BUD31 is found on chromosome 7 which is about 158 million bases long, encodes over 1,000 genes and makes up about 5 % of the human genome. Chromosome 7 has been linked to osteogenesis

Target Details

imperfecta, Pendred syndrome, lissencephaly, citrullinemia and Shwachman-Diamond syndrome. The deletion of a portion of the long (q) arm of human chromosome 7 is associated with Williams-Beuren syndrome, a condition characterized by mild mental retardation, an unusual comfort and friendliness with strangers and an elfin appearance. Deletions of portions of the q arm of chromosome 7 are also seen in a number of myeloid disorders including cases of acute myelogenous leukemia and myelodysplasia.

Molecular Weight: Observed_MW: Refer to figures
Calculated_MW: 17 kDa

UniProt: [P41223](#)

Application Details

Application Notes: WB 1:1000-1:5000, IHC 1:50-1:300, ELISA 1:5000-1:10000

Restrictions: For Research Use only

Handling

Format: Liquid

Concentration: 1.5 mg/mL

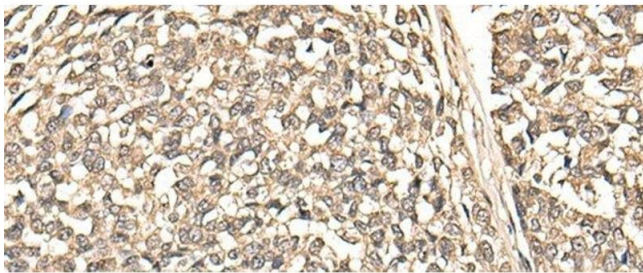
Buffer: PBS with 0.05 % Sodium azide and 40 % Glycerol, pH 7.4

Preservative: Sodium azide

Precaution of Use: This product contains Sodium azide: a POISONOUS AND HAZARDOUS SUBSTANCE which should be handled by trained staff only.

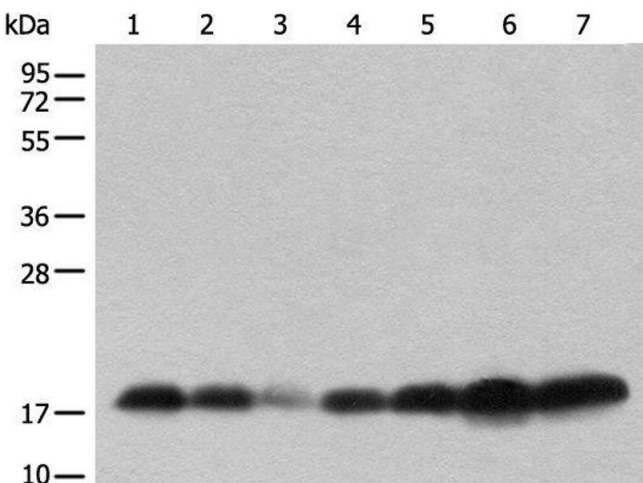
Storage: -20 °C

Storage Comment: Store at -20°C. Avoid freeze / thaw cycles.



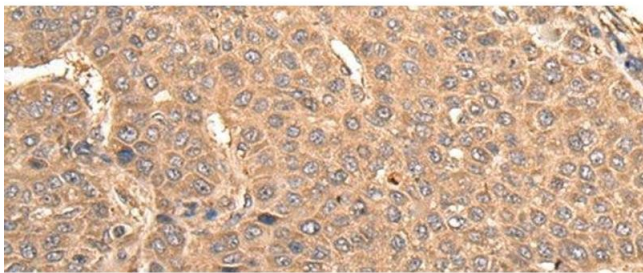
Immunohistochemistry (Paraffin-embedded Sections)

Image 1. Immunohistochemistry of paraffin-embedded Human esophagus cancer tissue using BUD31 Polyclonal Antibody at dilution of 1:75(x200)



Western Blotting

Image 2. Western Blot analysis of Human testis, Mouse brain, Mouse heart, PC-3 cell, 231 cell, Raji and Jurkat cell lysates Mouse lung and Rat spleen using BUD31 Polyclonal Antibody at dilution of 1:800.



Immunohistochemistry (Paraffin-embedded Sections)

Image 3. Immunohistochemistry of paraffin-embedded Human liver cancer tissue using BUD31 Polyclonal Antibody at dilution of 1:75(x200)