

Datasheet for ABIN7246064
anti-C15orf40 antibody



[Go to Product page](#)

2 Images

Overview

Quantity:	200 µL
Target:	C15orf40
Reactivity:	Human
Host:	Rabbit
Clonality:	Polyclonal
Conjugate:	This C15orf40 antibody is un-conjugated
Application:	Western Blotting (WB), ELISA, Immunohistochemistry (IHC)

Product Details

Immunogen:	Fusion protein of human C15orf40
Isotype:	IgG
Characteristics:	Polyclonal Antibody
Purification:	Antigen affinity purification

Target Details

Target:	C15orf40
Alternative Name:	C15orf40 (C15orf40 Products)
Background:	Encoding more than 700 genes, chromosome 15 is made up of approximately 106 million base pairs and is about 3 % of the human genome. Angelman and Prader-Willi syndromes are associated with loss of function or deletion of genes in the 15q11-q13 region. In the case of Angelman syndrome, this loss is due to inactivity of the maternal 15q11-q13 encoded UBE3A

Target Details

gene in the brain by either chromosomal deletion or mutation. In cases of Prader-Willi syndrome, there is a partial or complete deletion of this region from the paternal copy of chromosome 15. Tay-Sachs disease is a lethal disorder associated with mutations of the HEXA gene, which is encoded by chromosome 15. Marfan syndrome is associated with chromosome 15 through the FBN1 gene. The C15orf40 gene product has been provisionally designated C15orf40 pending further characterization.

Molecular Weight: Observed_MW: Refer to figures
Calculated_MW: 16 kDa

UniProt: [Q8WUR7](#)

Application Details

Application Notes: WB 1:500-1:2000, IHC 1:25-1:100, ELISA 1:5000-1:10000

Restrictions: For Research Use only

Handling

Format: Liquid

Concentration: 0.5 mg/mL

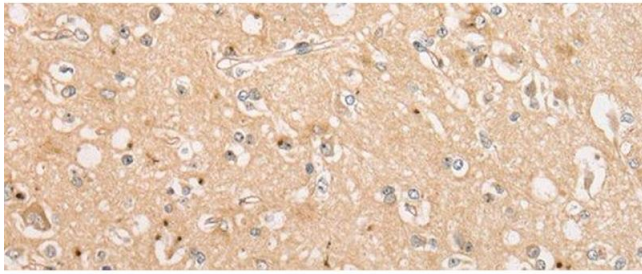
Buffer: PBS with 0.05 % Sodium azide and 40 % Glycerol, pH 7.4

Preservative: Sodium azide

Precaution of Use: This product contains Sodium azide: a POISONOUS AND HAZARDOUS SUBSTANCE which should be handled by trained staff only.

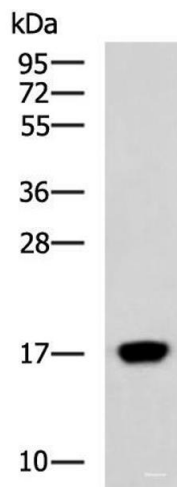
Storage: -20 °C

Storage Comment: Store at -20°C. Avoid freeze / thaw cycles.



Immunohistochemistry (Paraffin-embedded Sections)

Image 1. Immunohistochemistry of paraffin-embedded Human brain tissue using C15orf40 Polyclonal Antibody at dilution of 1:30(x200)



Western Blotting

Image 2. Western blot analysis of Human heart tissue lysate using C15orf40 Polyclonal Antibody at dilution of 1:400