



[Go to Product page](#)

Datasheet for ABIN7246070  
**anti-C17ORF67 antibody**

1 Image

### Overview

Quantity:	200 µL
Target:	C17ORF67
Reactivity:	Human
Host:	Rabbit
Clonality:	Polyclonal
Conjugate:	This C17ORF67 antibody is un-conjugated
Application:	ELISA, Immunohistochemistry (IHC)

### Product Details

Immunogen:	Fusion protein of human C17orf67
Isotype:	IgG
Characteristics:	Polyclonal Antibody
Purification:	Antigen affinity purification

### Target Details

Target:	C17ORF67
Alternative Name:	C17orf67 ( <a href="#">C17ORF67 Products</a> )
Background:	C17orf67 (chromosome 17 open reading frame 67) is a 114 amino acid protein that is encoded by a gene mapping to human chromosome 17. Chromosome 17 makes up over 2.5 % of the human genome with about 81 million bases encoding over 1,200 genes. Two key tumor suppressor genes are associated with chromosome 17, namely, p53 and BRCA1. Tumor

## Target Details

---

Suppressor p53 is necessary for maintenance of cellular genetic integrity by moderating cell fate through DNA repair versus cell death. Malfunction or loss of p53 expression is associated with malignant cell growth and Li-Fraumeni syndrome. Like p53, BRCA1 is directly involved in DNA repair, specifically it is recognized as a genetic determinant of early onset breast cancer and predisposition to cancers of the ovary, colon, prostate gland and fallopian tubes.

Chromosome 17 is also linked to neurofibromatosis, a condition characterized by neural and epidermal lesions, and dysregulated Schwann cell growth. Alexander disease, Birt-Hogg-Dube syndrome and Canavan disease are also associated with chromosome 17.

UniProt: [Q0P5P2](#)

## Application Details

---

Application Notes: IHC 1:40-1:200, ELISA 1:5000-1:10000

Restrictions: For Research Use only

## Handling

---

Format: Liquid

Concentration: 0.7 mg/mL

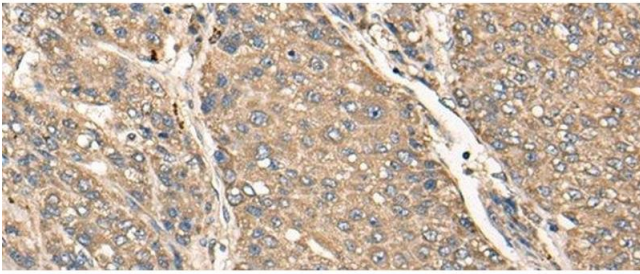
Buffer: PBS with 0.05 % Sodium azide and 40 % Glycerol, pH 7.4

Preservative: Sodium azide

Precaution of Use: This product contains Sodium azide: a POISONOUS AND HAZARDOUS SUBSTANCE which should be handled by trained staff only.

Storage: -20 °C

Storage Comment: Store at -20°C. Avoid freeze / thaw cycles.



#### Immunohistochemistry (Paraffin-embedded Sections)

**Image 1.** Immunohistochemistry of paraffin-embedded Human liver cancer tissue using C17orf67 Polyclonal Antibody at dilution of 1:50(x200)