

Datasheet for ABIN7246085  
**anti-C1orf112 antibody**



[Go to Product page](#)

1 Image

### Overview

Quantity:	200 µL
Target:	C1orf112 (C1ORF112)
Reactivity:	Human
Host:	Rabbit
Clonality:	Polyclonal
Conjugate:	This C1orf112 antibody is un-conjugated
Application:	ELISA, Immunohistochemistry (IHC)

### Product Details

Immunogen:	Fusion protein of human C1orf112
Isotype:	IgG
Characteristics:	Polyclonal Antibody
Purification:	Antigen affinity purification

### Target Details

Target:	C1orf112 (C1ORF112)
Alternative Name:	C1orf112 ( <a href="#">C1ORF112 Products</a> )
Background:	The function of this protein remains unknown.
UniProt:	<a href="#">Q9NSG2</a>

## Application Details

---

Application Notes: IHC 1:100-1:300, ELISA 1:5000-1:10000

Restrictions: For Research Use only

## Handling

---

Format: Liquid

Concentration: 1.92 mg/mL

Buffer: PBS with 0.05 % Sodium azide and 40 % Glycerol, pH 7.4

Preservative: Sodium azide

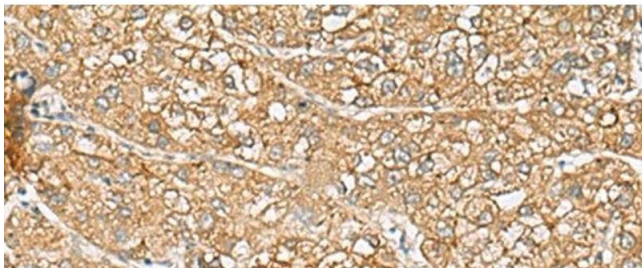
Precaution of Use: This product contains Sodium azide: a POISONOUS AND HAZARDOUS SUBSTANCE which should be handled by trained staff only.

Storage: -20 °C

Storage Comment: Store at -20°C. Avoid freeze / thaw cycles.

## Images

---



### Immunohistochemistry (Paraffin-embedded Sections)

**Image 1.** Immunohistochemistry of paraffin-embedded Human liver cancer tissue using C1orf112 Polyclonal Antibody at dilution of 1:110(x200)