



[Go to Product page](#)

Datasheet for ABIN7246112  
**anti-CABP5 antibody**

2 Images

### Overview

|              |                                      |
|--------------|--------------------------------------|
| Quantity:    | 200 µL                               |
| Target:      | CABP5                                |
| Reactivity:  | Human, Mouse                         |
| Host:        | Rabbit                               |
| Clonality:   | Polyclonal                           |
| Conjugate:   | This CABP5 antibody is un-conjugated |
| Application: | ELISA, Immunohistochemistry (IHC)    |

### Product Details

|                  |                               |
|------------------|-------------------------------|
| Immunogen:       | Full length fusion protein    |
| Isotype:         | IgG                           |
| Characteristics: | Polyclonal Antibody           |
| Purification:    | Antigen affinity purification |

### Target Details

|                   |  |
|-------------------|--|
| Target:           | CABP5  |
| Alternative Name: | CABP5 ( <a href="#">CABP5 Products</a> )   |
| Background:       | The product of this gene belongs to a subfamily of calcium binding proteins, which share similarity to calmodulin. Calcium binding proteins are an important component of calcium mediated cellular signal transduction. Expression of this gene is retina-specific. The mouse homolog of this protein has been shown to express in the inner nuclear layer of the retina, |

## Target Details

suggested its role in neuronal functioning. The specific function of this gene is unknown.

UniProt: [Q9NP86](#)

## Application Details

Application Notes: IHC 1:50-1:300, ELISA 1:5000-1:10000

Restrictions: For Research Use only

## Handling

Format: Liquid

Concentration: 1 mg/mL

Buffer: PBS with 0.05 % Sodium azide and 40 % Glycerol, pH 7.4

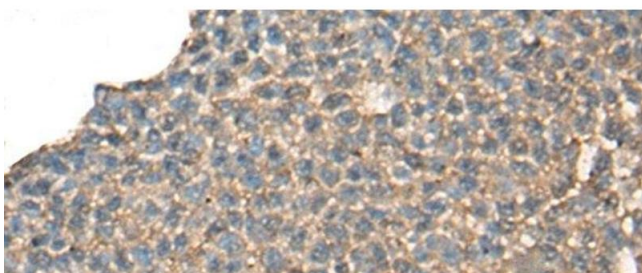
Preservative: Sodium azide

Precaution of Use: This product contains Sodium azide: a POISONOUS AND HAZARDOUS SUBSTANCE which should be handled by trained staff only.

Storage: -20 °C

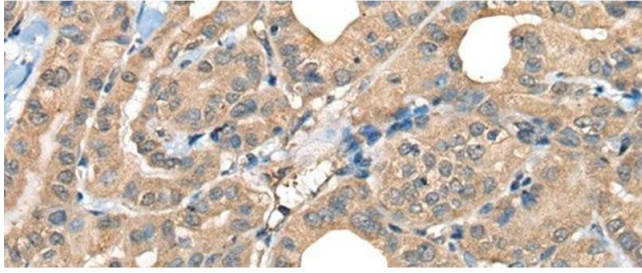
Storage Comment: Store at -20°C. Avoid freeze / thaw cycles.

## Images



### Immunohistochemistry (Paraffin-embedded Sections)

**Image 1.** Immunohistochemistry of paraffin-embedded Human ovarian cancer tissue using CABP5 Polyclonal Antibody at dilution of 1:65(x200)



### Immunohistochemistry (Paraffin-embedded Sections)

**Image 2.** Immunohistochemistry of paraffin-embedded Human thyroid cancer tissue using CABP5 Polyclonal Antibody at dilution of 1:65(x200)