

Datasheet for ABIN7246118

anti-CASR antibody

2 Images

[Go to Product page](#)

Overview

Quantity:	200 µL
Target:	CASR
Reactivity:	Human
Host:	Rabbit
Clonality:	Polyclonal
Conjugate:	This CASR antibody is un-conjugated
Application:	ELISA, Immunohistochemistry (IHC)

Product Details

Immunogen:	Fusion protein of human CASR
Isotype:	IgG
Characteristics:	Polyclonal Antibody
Purification:	Antigen affinity purification

Target Details

Target:	CASR
Alternative Name:	CASR (CASR Products)
Background:	CASR (Calcium Sensing Receptor) is a Protein Coding gene. Diseases associated with CASR include Hypocalcemia, Autosomal Dominant and Hyperparathyroidism, Neonatal. Among its related pathways are Proton Pump Inhibitor Pathway, Pharmacodynamics and Peptide ligand-binding receptors. GO annotations related to this gene include G-protein coupled receptor

Target Details

activity and protein kinase binding. An important paralog of this gene is GPRC6A. The protein encoded by this gene is a G protein-coupled receptor that is expressed in the parathyroid hormone (PTH)-producing chief cells of the parathyroid gland, and the cells lining the kidney tubule. It senses small changes in circulating calcium concentration and couples this information to intracellular signaling pathways that modify PTH secretion or renal cation handling, thus this protein plays an essential role in maintaining mineral ion homeostasis. Mutations in this gene cause familial hypocalciuric hypercalcemia, familial, isolated hypoparathyroidism, and neonatal severe primary hyperparathyroidism.

UniProt: [P41180](#)

Pathways: [Positive Regulation of Peptide Hormone Secretion](#), [Carbohydrate Homeostasis](#)

Application Details

Application Notes: IHC 1:50-1:300, ELISA 1:5000-1:10000

Restrictions: For Research Use only

Handling

Format: Liquid

Concentration: 0.5 mg/mL

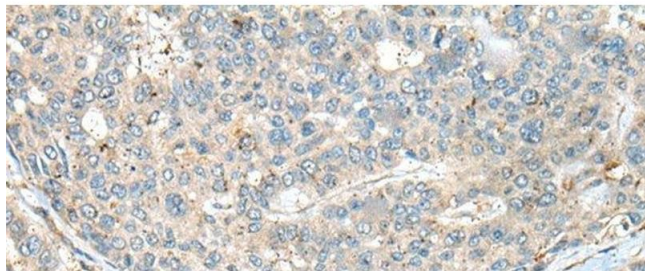
Buffer: PBS with 0.05 % Sodium azide and 40 % Glycerol, pH 7.4

Preservative: Sodium azide

Precaution of Use: This product contains Sodium azide: a POISONOUS AND HAZARDOUS SUBSTANCE which should be handled by trained staff only.

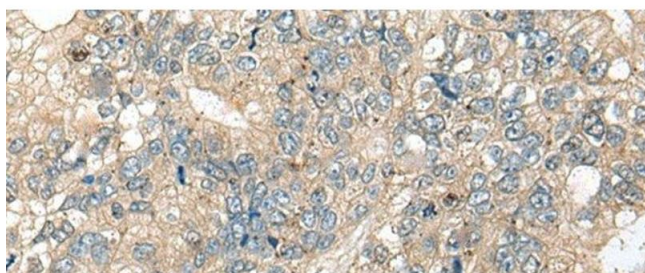
Storage: -20 °C

Storage Comment: Store at -20°C. Avoid freeze / thaw cycles.



Immunohistochemistry (Paraffin-embedded Sections)

Image 1. Immunohistochemistry of paraffin-embedded Human liver cancer tissue using CASR Polyclonal Antibody at dilution of 1:60(x200)



Immunohistochemistry (Paraffin-embedded Sections)

Image 2. Immunohistochemistry of paraffin-embedded Human gastric cancer tissue using CASR Polyclonal Antibody at dilution of 1:60(x200)