

Datasheet for ABIN7246121

**anti-CALML5 antibody****2** Images[Go to Product page](#)

## Overview

Quantity:	200 µL
Target:	CALML5
Reactivity:	Human
Host:	Rabbit
Clonality:	Polyclonal
Conjugate:	This CALML5 antibody is un-conjugated
Application:	ELISA, Immunohistochemistry (IHC)

## Product Details

Immunogen:	Full length fusion protein
Isotype:	IgG
Characteristics:	Polyclonal Antibody
Purification:	Antigen affinity purification

## Target Details

Target:	CALML5
Alternative Name:	CALML5 ( <a href="#">CALML5 Products</a> )
Background:	<p>This gene encodes a novel calcium binding protein expressed in the epidermis and related to the calmodulin family of calcium binding proteins. Functional studies with recombinant protein demonstrate it does bind calcium and undergoes a conformational change when it does so.</p> <p>Abundant expression is detected only in reconstructed epidermis and is restricted to</p>

## Target Details

differentiating keratinocytes. In addition, it can associate with transglutaminase 3, shown to be a key enzyme in the terminal differentiation of keratinocytes.

UniProt: [Q9NZT1](#)

Pathways: [Phototransduction](#)

## Application Details

Application Notes: IHC 1:50-1:300, ELISA 1:5000-1:10000

Restrictions: For Research Use only

## Handling

Format: Liquid

Concentration: 1.3 mg/mL

Buffer: PBS with 0.05 % Sodium azide and 40 % Glycerol, pH 7.4

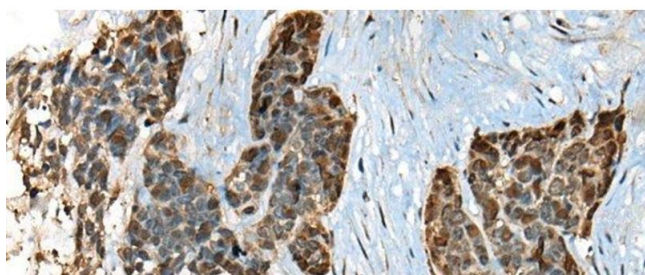
Preservative: Sodium azide

Precaution of Use: This product contains Sodium azide: a POISONOUS AND HAZARDOUS SUBSTANCE which should be handled by trained staff only.

Storage: -20 °C

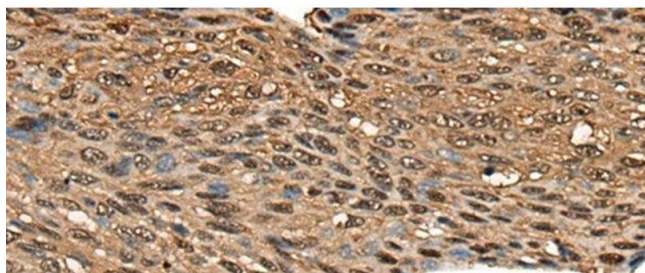
Storage Comment: Store at -20°C. Avoid freeze / thaw cycles.

## Images



### Immunohistochemistry (Paraffin-embedded Sections)

**Image 1.** Immunohistochemistry of paraffin-embedded Human thyroid cancer tissue using CALML5 Polyclonal Antibody at dilution of 1:70(x200)



#### Immunohistochemistry (Paraffin-embedded Sections)

**Image 2.** Immunohistochemistry of paraffin-embedded Human esophagus cancer tissue using CALML5 Polyclonal Antibody at dilution of 1:70(x200)