

Datasheet for ABIN7246154

anti-CDADC1 antibody

3 Images

[Go to Product page](#)

Overview

Quantity:	200 µL
Target:	CDADC1
Reactivity:	Human, Mouse
Host:	Rabbit
Clonality:	Polyclonal
Conjugate:	This CDADC1 antibody is un-conjugated
Application:	ELISA, Western Blotting (WB), Immunohistochemistry (IHC)

Product Details

Immunogen:	Full length fusion protein
Isotype:	IgG
Characteristics:	Polyclonal Antibody
Purification:	Antigen affinity purification

Target Details

Target:	CDADC1
Alternative Name:	CDADC1 (CDADC1 Products)
Background:	NYD-SP15 (testis development protein NYD-SP15), also known as CDADC1 (cytidine and dCMP deaminase domain containing 1), is a widely expressed protein with predominant expression in the testis, liver, spleen, kidney, thymus and placenta. NYD-SP15 is 514 amino acids in length and belongs to the cytidine and deoxycytidylate deaminase family. It is developmentally

Target Details

regulated with higher expression in adult testis than fetal testis and is believed to participate in spermatogenesis and testicular development. This suggests that NYD-SP15 may be a determining factor in male infertility. Due to alternative splicing events, four transcript variants exist for NYD-SP15.

Molecular Weight: Observed_MW: Refer to figures
Calculated_MW: 58 kDa

UniProt: [Q9BWV3](#)

Application Details

Application Notes: WB 1:500-1:2000, IHC 1:50-1:300, ELISA 1:5000-1:10000

Restrictions: For Research Use only

Handling

Format: Liquid

Concentration: 0.6 mg/mL

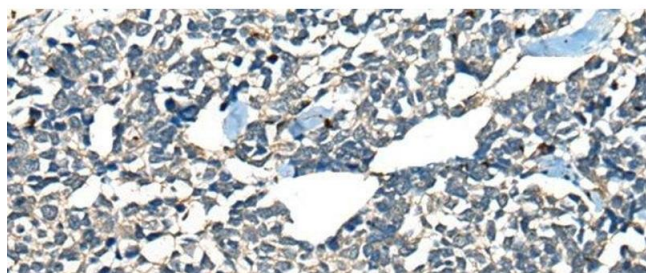
Buffer: PBS with 0.05 % Sodium azide and 40 % Glycerol, pH 7.4

Preservative: Sodium azide

Precaution of Use: This product contains Sodium azide: a POISONOUS AND HAZARDOUS SUBSTANCE which should be handled by trained staff only.

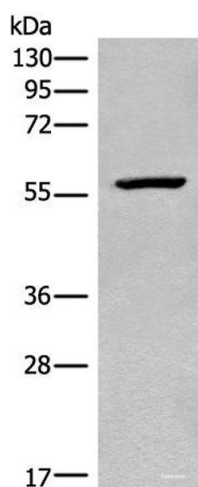
Storage: -20 °C

Storage Comment: Store at -20°C. Avoid freeze / thaw cycles.



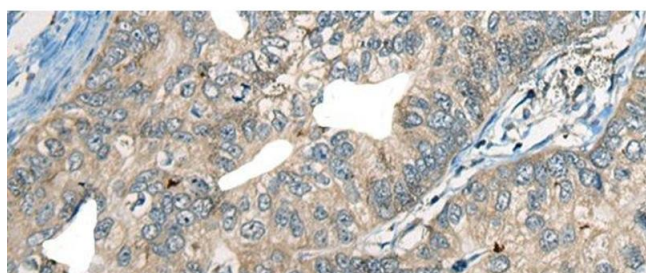
Immunohistochemistry (Paraffin-embedded Sections)

Image 1. Immunohistochemistry of paraffin-embedded Human lung cancer tissue using CDADC1 Polyclonal Antibody at dilution of 1:60(x200)



Western Blotting

Image 2. Western blot analysis of Mouse heart tissue lysate using CDADC1 Polyclonal Antibody at dilution of 1:450



Immunohistochemistry (Paraffin-embedded Sections)

Image 3. Immunohistochemistry of paraffin-embedded Human gastric cancer tissue using CDADC1 Polyclonal Antibody at dilution of 1:60(x200)