



## Datasheet for ABIN7246157 **anti-CDC7 antibody**



[Go to Product page](#)

### 1 Image

#### Overview

Quantity:	200 µL
Target:	CDC7
Reactivity:	Human
Host:	Rabbit
Clonality:	Polyclonal
Conjugate:	This CDC7 antibody is un-conjugated
Application:	Western Blotting (WB), ELISA

#### Product Details

Immunogen:	Fusion protein of human CDC7
Isotype:	IgG
Characteristics:	Polyclonal Antibody
Purification:	Antigen affinity purification

#### Target Details

Target:	CDC7
Alternative Name:	CDC7 ( <a href="#">CDC7 Products</a> )
Background:	This gene encodes a cell division cycle protein with kinase activity that is critical for the G1/S transition. The yeast homolog is also essential for initiation of DNA replication as cell division occurs. Overexpression of this gene product may be associated with neoplastic transformation for some tumors. Multiple alternatively spliced transcript variants that encode the same protein

## Target Details

have been detected.

Molecular Weight: Observed\_MW: Refer to figures  
Calculated\_MW: 64 kDa

UniProt: [O00311](#)

Pathways: [Mitotic G1-G1/S Phases, DNA Replication](#)

## Application Details

Application Notes: WB 1:500-1:2000, ELISA 1:5000-1:10000

Restrictions: For Research Use only

## Handling

Format: Liquid

Concentration: 0.5 mg/mL

Buffer: PBS with 0.05 % Sodium azide and 40 % Glycerol, pH 7.4

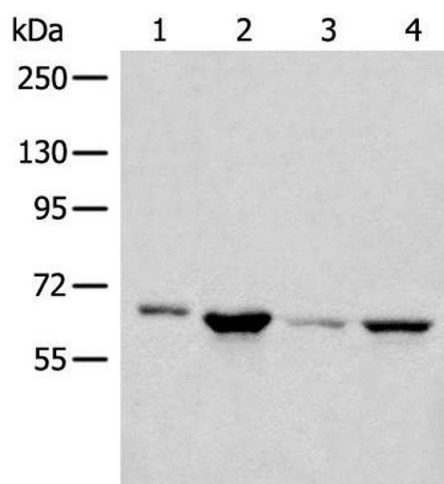
Preservative: Sodium azide

Precaution of Use: This product contains Sodium azide: a POISONOUS AND HAZARDOUS SUBSTANCE which should be handled by trained staff only.

Storage: -20 °C

Storage Comment: Store at -20°C. Avoid freeze / thaw cycles.

## Images



### Western Blotting

**Image 1.** Western blot analysis of 293T PC-3 Hela cell lysates using CDC7 Polyclonal Antibody at dilution of 1:450