

Datasheet for ABIN7246163

anti-CETN3 antibody[Go to Product page](#)**1** Image

Overview

Quantity:	200 µL
Target:	CETN3
Reactivity:	Human, Mouse
Host:	Rabbit
Clonality:	Polyclonal
Conjugate:	This CETN3 antibody is un-conjugated
Application:	Western Blotting (WB), ELISA

Product Details

Immunogen:	Full length fusion protein
Isotype:	IgG
Characteristics:	Polyclonal Antibody
Purification:	Antigen affinity purification

Target Details

Target:	CETN3
Alternative Name:	CETN3 (CETN3 Products)
Background:	The protein encoded by this gene contains four EF-hand calcium binding domains, and is a member of the centrin protein family. Centrins are evolutionarily conserved proteins similar to the CDC31 protein of <i>S. cerevisiae</i> . Yeast CDC31 is located at the centrosome of interphase and mitotic cells, where it plays a fundamental role in centrosome duplication and separation.

Target Details

Multiple forms of the proteins similar to the yeast centrin have been identified in human and other mammalian cells, some of which have been shown to be associated with centrosome fractions. This protein appears to be one of the most abundant centrins associated with centrosome, which suggests a similar function to its yeast counterpart. Alternatively spliced transcript variants encoding different isoforms have been found for this gene.

Molecular Weight: Observed_MW: Refer to figures
Calculated_MW: 20 kDa

UniProt: [015182](#)

Application Details

Application Notes: WB 1:500-1:2000, ELISA 1:5000-1:10000

Restrictions: For Research Use only

Handling

Format: Liquid

Concentration: 0.6 mg/mL

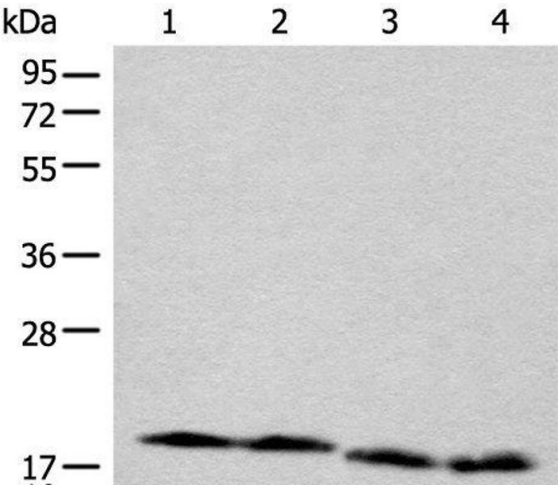
Buffer: PBS with 0.05 % Sodium azide and 40 % Glycerol, pH 7.4

Preservative: Sodium azide

Precaution of Use: This product contains Sodium azide: a POISONOUS AND HAZARDOUS SUBSTANCE which should be handled by trained staff only.

Storage: -20 °C

Storage Comment: Store at -20°C. Avoid freeze / thaw cycles.



Western Blotting

Image 1. Western blot analysis of TM4 Jurkat NIH/3T3 and RAW264.7 cell lysates using CETN3 Polyclonal Antibody at dilution of 1:600