



[Go to Product page](#)

Datasheet for ABIN7246175

anti-Chordin antibody

1 Image

Overview

Quantity:	200 µL
Target:	Chordin (CHRD)
Reactivity:	Human, Mouse, Rat
Host:	Rabbit
Clonality:	Polyclonal
Conjugate:	This Chordin antibody is un-conjugated
Application:	Immunohistochemistry (IHC), ELISA

Product Details

Immunogen:	Fusion protein of human CHRD
Isotype:	IgG
Characteristics:	Polyclonal Antibody
Purification:	Antigen affinity purification

Target Details

Target:	Chordin (CHRD)
Alternative Name:	CHRD (CHRD Products)
Background:	CHRD (Chordin) is a Protein Coding gene. Diseases associated with CHRD include Cornelia De Lange Syndrome. Among its related pathways are Mesodermal Commitment Pathway and TGF-beta signaling pathway (KEGG). GO annotations related to this gene include heparin binding and syndecan binding. An important paralog of this gene is CHRDL2. This gene encodes

Target Details

a secreted protein that dorsalizes early vertebrate embryonic tissues by binding to ventralizing TGF-beta-like bone morphogenetic proteins and sequestering them in latent complexes. The encoded protein may also have roles in organogenesis and during adulthood. It has been suggested that this gene could be a candidate gene for Cornelia de Lange syndrome. Reduced expression of this gene results in enhanced bone regeneration. Alternative splicing results in multiple transcript variants. Other alternative splice variants have been described but their full length sequence has not been determined.

UniProt: [Q9H2X0](#)

Application Details

Application Notes: IHC 1:30-1:150, ELISA 1:5000-1:10000

Restrictions: For Research Use only

Handling

Format: Liquid

Concentration: 0.8 mg/mL

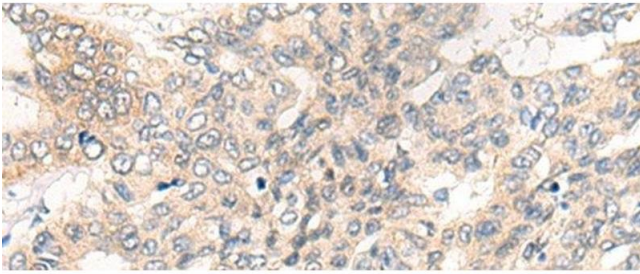
Buffer: PBS with 0.05 % Sodium azide and 40 % Glycerol, pH 7.4

Preservative: Sodium azide

Precaution of Use: This product contains Sodium azide: a POISONOUS AND HAZARDOUS SUBSTANCE which should be handled by trained staff only.

Storage: -20 °C

Storage Comment: Store at -20°C. Avoid freeze / thaw cycles.



Immunohistochemistry (Paraffin-embedded Sections)

Image 1. Immunohistochemistry of paraffin-embedded Human liver cancer tissue using CHRD Polyclonal Antibody at dilution of 1:40(x200)