

Datasheet for ABIN7246190

anti-CRABP1 antibody**2** Images[Go to Product page](#)

Overview

Quantity:	200 µL
Target:	CRABP1
Reactivity:	Human, Mouse, Rat
Host:	Rabbit
Clonality:	Polyclonal
Conjugate:	This CRABP1 antibody is un-conjugated
Application:	ELISA, Western Blotting (WB), Immunohistochemistry (IHC)

Product Details

Immunogen:	Fusion protein of human CRABP1
Isotype:	IgG
Characteristics:	Polyclonal Antibody
Purification:	Antigen affinity purification

Target Details

Target:	CRABP1
Alternative Name:	CRABP1 (CRABP1 Products)
Background:	This gene encodes a specific binding protein for a vitamin A family member and is thought to play an important role in retinoic acid-mediated differentiation and proliferation processes. It is structurally similar to the cellular retinol-binding proteins, but binds only retinoic acid at specific sites within the nucleus, which may contribute to vitamin A-directed differentiation in epithelial

Target Details

	tissue.
Molecular Weight:	Observed_MW: Refer to figures Calculated_MW: 16 kDa
UniProt:	P29762

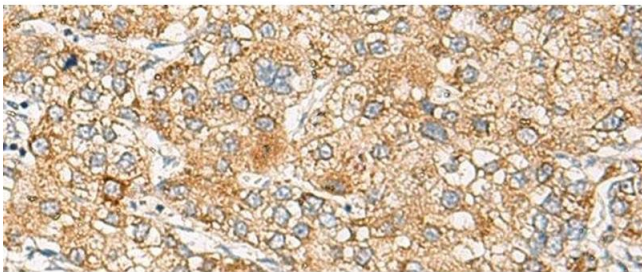
Application Details

Application Notes:	WB 1:1000-1:5000, IHC 1:100-1:300, ELISA 1:5000-1:10000
Restrictions:	For Research Use only

Handling

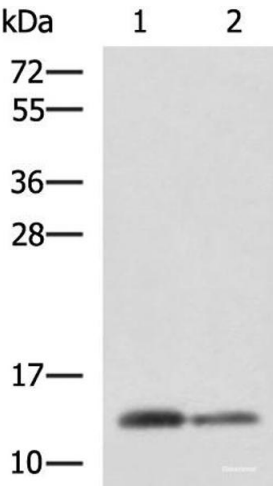
Format:	Liquid
Concentration:	2.1 mg/mL
Buffer:	PBS with 0.05 % Sodium azide and 40 % Glycerol, pH 7.4
Preservative:	Sodium azide
Precaution of Use:	This product contains Sodium azide: a POISONOUS AND HAZARDOUS SUBSTANCE which should be handled by trained staff only.
Storage:	-20 °C
Storage Comment:	Store at -20°C. Avoid freeze / thaw cycles.

Images



Immunohistochemistry (Paraffin-embedded Sections)

Image 1. Immunohistochemistry of paraffin-embedded Human liver cancer tissue using CRABP1 Polyclonal Antibody at dilution of 1:120(x200)



Western Blotting

Image 2. Western blot analysis of Human breast tissue and Human thyroid tissue lysates using CRABP1 Polyclonal Antibody at dilution of 1:2000