



[Go to Product page](#)

Datasheet for ABIN7246196

## anti-DACT3 antibody

### 1 Image

#### Overview

Quantity:	200 µL
Target:	DACT3
Reactivity:	Human, Mouse
Host:	Rabbit
Clonality:	Polyclonal
Conjugate:	This DACT3 antibody is un-conjugated
Application:	ELISA, Immunohistochemistry (IHC)

#### Product Details

Immunogen:	Fusion protein of human DACT3
Isotype:	IgG
Characteristics:	Polyclonal Antibody
Purification:	Antigen affinity purification

#### Target Details

Target:	DACT3
Alternative Name:	DACT3 ( <a href="#">DACT3 Products</a> )
Background:	May be involved in regulation of intracellular signaling pathways during development. Specifically thought to play a role in canonical and/or non-canonical Wnt signaling pathways through interaction with DSH (Dishevelled) family proteins.

## Target Details

---

UniProt: [Q96B18](#)

## Application Details

---

Application Notes: IHC 1:50-1:200, ELISA 1:5000-1:10000

Restrictions: For Research Use only

## Handling

---

Format: Liquid

Concentration: 1.26 mg/mL

Buffer: PBS with 0.05 % Sodium azide and 40 % Glycerol, pH 7.4

Preservative: Sodium azide

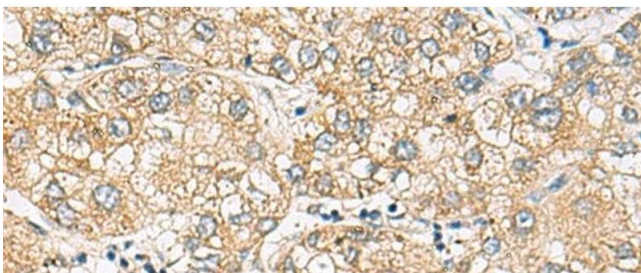
Precaution of Use: This product contains Sodium azide: a POISONOUS AND HAZARDOUS SUBSTANCE which should be handled by trained staff only.

Storage: -20 °C

Storage Comment: Store at -20°C. Avoid freeze / thaw cycles.

## Images

---



### Immunohistochemistry (Paraffin-embedded Sections)

**Image 1.** Immunohistochemistry of paraffin-embedded Human liver cancer tissue using DACT3 Polyclonal Antibody at dilution of 1:70(x200)