



[Go to Product page](#)

Datasheet for ABIN7246202

anti-DDI2 antibody

2 Images

Overview

Quantity:	200 µL
Target:	DDI2
Reactivity:	Human, Mouse
Host:	Rabbit
Clonality:	Polyclonal
Conjugate:	This DDI2 antibody is un-conjugated
Application:	ELISA, Western Blotting (WB), Immunohistochemistry (IHC)

Product Details

Immunogen:	Fusion protein of human DDI2
Isotype:	IgG
Characteristics:	Polyclonal Antibody
Purification:	Antigen affinity purification

Target Details

Target:	DDI2
Alternative Name:	DDI2 (DDI2 Products)
Background:	DDI1 and DDI2 are ubiquitin receptor homologs of the <i>Saccharomyces cerevisiae</i> ddi1 protein, which is involved in regulation of the cell cycle and the late secretory pathway. DDI2 is a 399 amino acid protein that contains one ubiquitin-like domain and exists as three isoforms as a result of alternative splicing. The gene encoding DDI2 maps to human chromosome 1, the

Target Details

largest human chromosome which spans about 260 million base pairs and makes up 8 % of the human genome. Other notable genes located on chromosome 1 include LMNA, which is associated with the rare aging disease Hutchinson-Gilford progeria, and the MUTYH gene, which is partially responsible for familial adenomatous polyposis. Stickler syndrome, Parkinsons, Gaucher disease and Usher syndrome.

Molecular Weight: Observed_MW: Refer to figures
Calculated_MW: 45 kDa

UniProt: [Q5TDH0](#)

Application Details

Application Notes: WB 1:500-1:2000, IHC 1:50-1:300, ELISA 1:5000-1:10000

Restrictions: For Research Use only

Handling

Format: Liquid

Concentration: 1.32 mg/mL

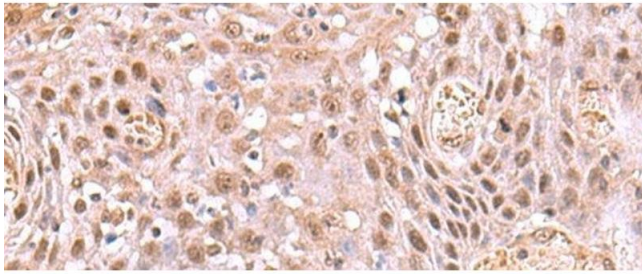
Buffer: PBS with 0.05 % Sodium azide and 40 % Glycerol, pH 7.4

Preservative: Sodium azide

Precaution of Use: This product contains Sodium azide: a POISONOUS AND HAZARDOUS SUBSTANCE which should be handled by trained staff only.

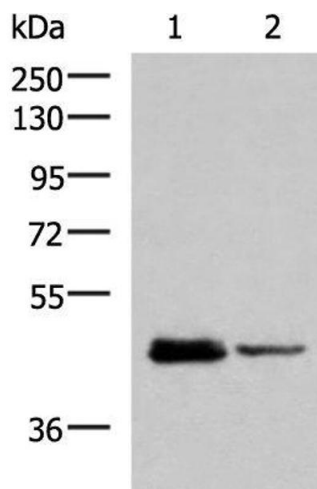
Storage: -20 °C

Storage Comment: Store at -20°C. Avoid freeze / thaw cycles.



Immunohistochemistry (Paraffin-embedded Sections)

Image 1. Immunohistochemistry of paraffin-embedded Human tonsil tissue using DDI2 Polyclonal Antibody at dilution of 1:75(x200)



Western Blotting

Image 2. Western blot analysis of HL60 and Jurkat cell lysates using DDI2 Polyclonal Antibody at dilution of 1:800