



## Datasheet for ABIN7246244 anti-GK5 antibody



[Go to Product page](#)

### 2 Images

#### Overview

Quantity:	200 µL
Target:	GK5
Reactivity:	Human
Host:	Rabbit
Clonality:	Polyclonal
Conjugate:	This GK5 antibody is un-conjugated
Application:	ELISA, Western Blotting (WB), Immunohistochemistry (IHC)

#### Product Details

Immunogen:	Full length fusion protein
Isotype:	IgG
Characteristics:	Polyclonal Antibody
Purification:	Antigen affinity purification

#### Target Details

Target:	GK5
Alternative Name:	GK5 ( <a href="#">GK5 Products</a> )
Background:	GK5(Putative glycerol kinase 5) is also named as ATP:glycerol 3-phosphotransferase 5 and belongs to the FGGY kinase family.It is involved in Glycerol metabolism and catalyzes the phosphorylation of glycerol by ATP, yielding ADP and glycerol-3-phosphate.It has 3 isoforms produced by alternative splicing with the MW of 59 kDa, 34 kDa and 28 kDa.

## Target Details

Molecular Weight: Observed\_MW: Refer to figures  
Calculated\_MW: 59 kDa

UniProt: [Q6ZS86](#)

## Application Details

Application Notes: WB 1:500-1:2000, IHC 1:30-1:150, ELISA 1:5000-1:10000

Restrictions: For Research Use only

## Handling

Format: Liquid

Concentration: 1.26 mg/mL

Buffer: PBS with 0.05 % Sodium azide and 40 % Glycerol, pH 7.4

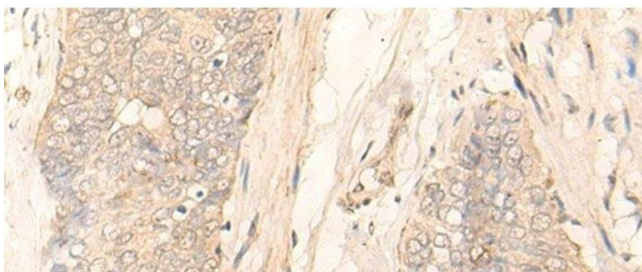
Preservative: Sodium azide

Precaution of Use: This product contains Sodium azide: a POISONOUS AND HAZARDOUS SUBSTANCE which should be handled by trained staff only.

Storage: -20 °C

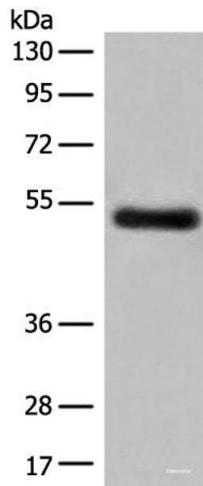
Storage Comment: Store at -20°C. Avoid freeze / thaw cycles.

## Images



### Immunohistochemistry (Paraffin-embedded Sections)

**Image 1.** Immunohistochemistry of paraffin-embedded Human esophagus cancer tissue using GK5 Polyclonal Antibody at dilution of 1:35(x200)



### Western Blotting

**Image 2.** Western blot analysis of Human breast cancer tissue lysate using GK5 Polyclonal Antibody at dilution of 1:500