



[Go to Product page](#)

Datasheet for ABIN7246295

## anti-ARMC8 antibody

### 2 Images

#### Overview

Quantity:	200 µL
Target:	ARMC8
Reactivity:	Human, Mouse
Host:	Rabbit
Clonality:	Polyclonal
Conjugate:	This ARMC8 antibody is un-conjugated
Application:	ELISA, Immunohistochemistry (IHC)

#### Product Details

Immunogen:	Fusion protein of human ARMC8
Isotype:	IgG
Characteristics:	Polyclonal Antibody
Purification:	Antigen affinity purification

#### Target Details

Target:	ARMC8
Alternative Name:	ARMC8 ( <a href="#">ARMC8 Products</a> )
Background:	The armadillo (ARM) repeat family of proteins are related to the Drosophila melanogaster armadillo protein, a protein essential for wingless signal transduction. ARM proteins are involved in a variety of processes such as cell migration, cell proliferation, tissue maintenance and tumorigenesis, and they also function in signal transduction and the maintenance of overall

## Target Details

---

cell structure. ARMC8 (armadillo repeat containing 8), also known as S863-2, is a 673 amino acid protein that contains 14 ARM repeats, suggesting a role in signal transduction events throughout the cell. Six isoforms of ARMC8 are expressed due to alternative splicing events. The gene encoding ARMC8 maps to human chromosome 3, which houses over 1,100 genes, including a chemokine receptor (CKR) gene cluster and a variety of human cancer-related gene loci.

UniProt: [Q8IUR7](#)

## Application Details

---

Application Notes: IHC 1:40-1:200, ELISA 1:5000-1:10000

Restrictions: For Research Use only

## Handling

---

Format: Liquid

Concentration: 0.66 mg/mL

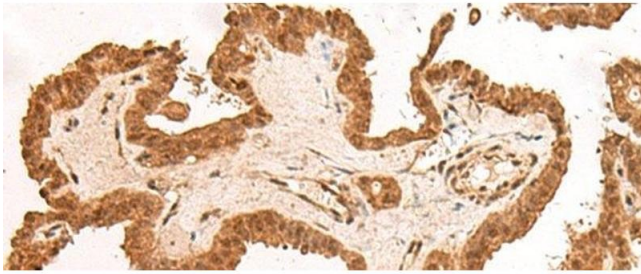
Buffer: PBS with 0.05 % Sodium azide and 40 % Glycerol, pH 7.4

Preservative: Sodium azide

Precaution of Use: This product contains Sodium azide: a POISONOUS AND HAZARDOUS SUBSTANCE which should be handled by trained staff only.

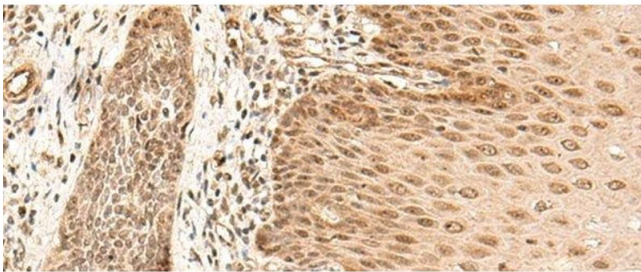
Storage: -20 °C

Storage Comment: Store at -20°C. Avoid freeze / thaw cycles.



#### Immunohistochemistry (Paraffin-embedded Sections)

**Image 1.** Immunohistochemistry of paraffin-embedded Human thyroid cancer tissue using ARMC8 Polyclonal Antibody at dilution of 1:40(x200)



#### Immunohistochemistry (Paraffin-embedded Sections)

**Image 2.** Immunohistochemistry of paraffin-embedded Human esophagus cancer tissue using ARMC8 Polyclonal Antibody at dilution of 1:40(x200)