

Datasheet for ABIN7246328

anti-EIF4A3 antibody**3** Images[Go to Product page](#)

Overview

Quantity:	200 µL
Target:	EIF4A3
Reactivity:	Human, Mouse, Rat
Host:	Rabbit
Clonality:	Polyclonal
Conjugate:	This EIF4A3 antibody is un-conjugated
Application:	Western Blotting (WB), ELISA, Immunohistochemistry (IHC)

Product Details

Immunogen:	Fusion protein of human EIF4A3
Isotype:	IgG
Characteristics:	Polyclonal Antibody
Purification:	Antigen affinity purification

Target Details

Target:	EIF4A3
Alternative Name:	EIF4A3 (EIF4A3 Products)
Background:	This gene encodes a member of the DEAD box protein family. DEAD box proteins, characterized by the conserved motif Asp-Glu-Ala-Asp (DEAD), are putative RNA helicases. They are implicated in a number of cellular processes involving alteration of RNA secondary structure, such as translation initiation, nuclear and mitochondrial splicing, and ribosome and

Target Details

spliceosome assembly. Based on their distribution patterns, some members of this family are believed to be involved in embryogenesis, spermatogenesis, and cellular growth and division. The protein encoded by this gene is a nuclear matrix protein. Its amino acid sequence is highly similar to the amino acid sequences of the translation initiation factors eIF4AI and eIF4AII, two other members of the DEAD box protein family.

Molecular Weight:	Observed_MW: Refer to figures Calculated_MW: 47 kDa
-------------------	--

UniProt:	P38919
----------	------------------------

Application Details

Application Notes:	WB 1:500-1:2000, IHC 1:50-1:300, ELISA 1:5000-1:10000
--------------------	---

Restrictions:	For Research Use only
---------------	-----------------------

Handling

Format:	Liquid
---------	--------

Concentration:	1.5 mg/mL
----------------	-----------

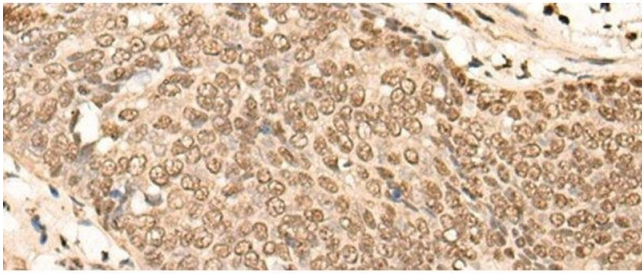
Buffer:	PBS with 0.05 % Sodium azide and 40 % Glycerol, pH 7.4
---------	--

Preservative:	Sodium azide
---------------	--------------

Precaution of Use:	This product contains Sodium azide: a POISONOUS AND HAZARDOUS SUBSTANCE which should be handled by trained staff only.
--------------------	--

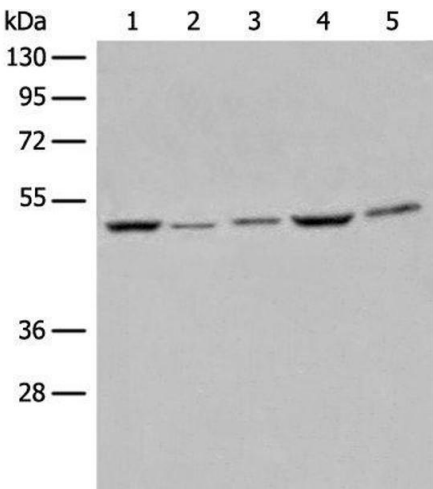
Storage:	-20 °C
----------	--------

Storage Comment:	Store at -20°C. Avoid freeze / thaw cycles.
------------------	---



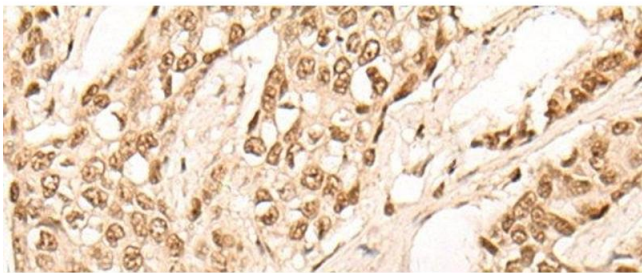
Immunohistochemistry (Paraffin-embedded Sections)

Image 1. Immunohistochemistry of paraffin-embedded Human esophagus cancer tissue using EIF4A3 Polyclonal Antibody at dilution of 1:45(x200)



Western Blotting

Image 2. Western blot analysis of Raji, Hela, A549, HEPG2 and 231 cell lysates using EIF4A3 Polyclonal Antibody at dilution of 1:500



Immunohistochemistry (Paraffin-embedded Sections)

Image 3. Immunohistochemistry of paraffin-embedded Human breast cancer tissue using EIF4A3 Polyclonal Antibody at dilution of 1:45(x200)