



Datasheet for ABIN7246334  
**anti-ZBTB8A antibody**



[Go to Product page](#)

3 Images

Overview

Quantity:	200 µL
Target:	ZBTB8A
Reactivity:	Human, Mouse, Rat
Host:	Rabbit
Clonality:	Polyclonal
Conjugate:	This ZBTB8A antibody is un-conjugated
Application:	Western Blotting (WB), ELISA, Immunohistochemistry (IHC)

Product Details

Immunogen:	Fusion protein of human ZBTB8A
Isotype:	IgG
Characteristics:	Polyclonal Antibody
Purification:	Antigen affinity purification

Target Details

Target:	ZBTB8A
Alternative Name:	ZBTB8A ( <a href="#">ZBTB8A Products</a> )
Background:	May be involved in transcriptional regulation.
Molecular Weight:	Observed_MW: Refer to figures Calculated_MW: 50 kDa

## Target Details

---

UniProt: [Q96BR9](#)

## Application Details

---

Application Notes: WB 1:500-1:2000, IHC 1:50-1:300, ELISA 1:5000-1:10000

Restrictions: For Research Use only

## Handling

---

Format: Liquid

Concentration: 0.84 mg/mL

Buffer: PBS with 0.05 % Sodium azide and 40 % Glycerol, pH 7.4

Preservative: Sodium azide

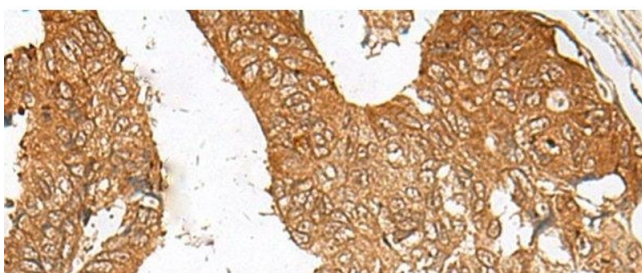
Precaution of Use: This product contains Sodium azide: a POISONOUS AND HAZARDOUS SUBSTANCE which should be handled by trained staff only.

Storage: -20 °C

Storage Comment: Store at -20°C. Avoid freeze / thaw cycles.

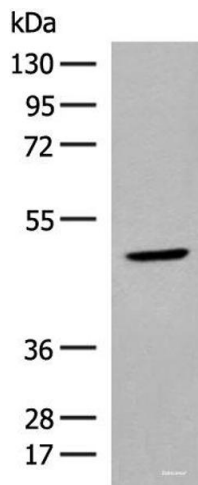
## Images

---



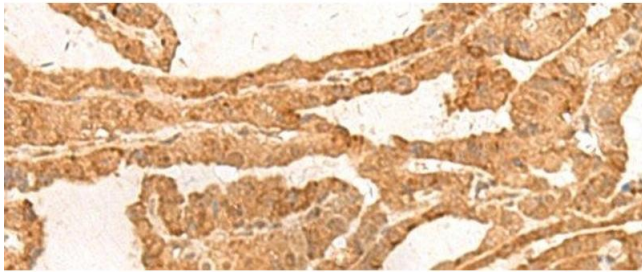
### Immunohistochemistry (Paraffin-embedded Sections)

**Image 1.** Immunohistochemistry of paraffin-embedded Human colorectal cancer tissue using ZBTB8A Polyclonal Antibody at dilution of 1:100(x200)



### Western Blotting

**Image 2.** Western blot analysis of Human thyroid tissue lysate using ZBTB8A Polyclonal Antibody at dilution of 1:350



### Immunohistochemistry (Paraffin-embedded Sections)

**Image 3.** Immunohistochemistry of paraffin-embedded Human thyroid cancer tissue using ZBTB8A Polyclonal Antibody at dilution of 1:100(x200)