



[Go to Product page](#)

Datasheet for ABIN7246355

## anti-MLLT6 antibody

### 1 Image

#### Overview

Quantity:	200 µL
Target:	MLLT6
Reactivity:	Human
Host:	Rabbit
Clonality:	Polyclonal
Conjugate:	This MLLT6 antibody is un-conjugated
Application:	ELISA, Immunohistochemistry (IHC)

#### Product Details

Immunogen:	Fusion protein of human MLLT6
Isotype:	IgG
Characteristics:	Polyclonal Antibody
Purification:	Antigen affinity purification

#### Target Details

Target:	MLLT6
Alternative Name:	MLLT6 ( <a href="#">MLLT6 Products</a> )
Background:	AF17 was discovered as part of a genetic rearrangement in the MLL (mixed lineage leukemia) gene associated with acute myeloid leukemia. AF17 is also known as MLLT6.
UniProt:	<a href="#">P55198</a>

## Application Details

---

Application Notes: IHC 1:30-1:150, ELISA 1:5000-1:10000

---

Restrictions: For Research Use only

---

## Handling

---

Format: Liquid

---

Concentration: 1.32 mg/mL

---

Buffer: PBS with 0.05 % Sodium azide and 40 % Glycerol, pH 7.4

---

Preservative: Sodium azide

---

Precaution of Use: This product contains Sodium azide: a POISONOUS AND HAZARDOUS SUBSTANCE which should be handled by trained staff only.

---

Storage: -20 °C

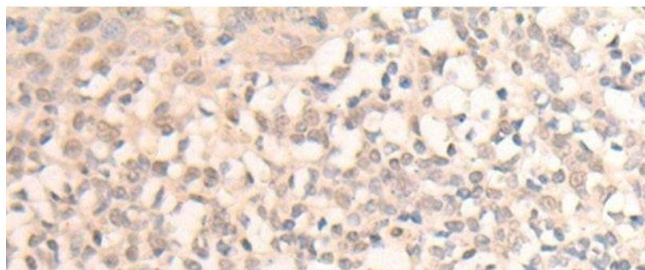
---

Storage Comment: Store at -20°C. Avoid freeze / thaw cycles.

---

## Images

---



### Immunohistochemistry (Paraffin-embedded Sections)

**Image 1.** Immunohistochemistry of paraffin-embedded Human tonsil tissue using MLLT6 Polyclonal Antibody at dilution of 1:40(x200)