



Datasheet for ABIN7246379
anti-ASMTL antibody



[Go to Product page](#)

2 Images

Overview

Quantity:	200 µL
Target:	ASMTL
Reactivity:	Human
Host:	Rabbit
Clonality:	Polyclonal
Conjugate:	This ASMTL antibody is un-conjugated
Application:	Immunohistochemistry (IHC), ELISA

Product Details

Immunogen:	Fusion protein of human ASMTL
Isotype:	IgG
Characteristics:	Polyclonal Antibody
Purification:	Antigen affinity purification

Target Details

Target:	ASMTL
Alternative Name:	ASMTL (ASMTL Products)
Background:	The protein encoded by this gene has an N-terminus that is similar to the multicopy associated filamentation (maf) protein of Bacillus subtilis and to orfE of Escherichia coli, while the C-terminus is similar to N-acetylserotonin O-methyltransferase. This gene is located in the pseudoautosomal region 1 (PAR1) of X and Y chromosomes. Three transcript variants

Target Details

encoding different isoforms have been found for this gene.

UniProt: [O95671](#)

Application Details

Application Notes: IHC 1:100-1:300, ELISA 1:5000-1:10000

Restrictions: For Research Use only

Handling

Format: Liquid

Concentration: 2.04 mg/mL

Buffer: PBS with 0.05 % Sodium azide and 40 % Glycerol, pH 7.4

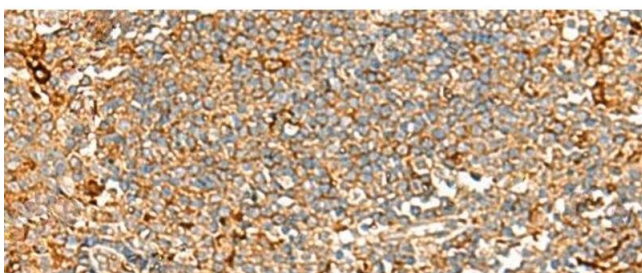
Preservative: Sodium azide

Precaution of Use: This product contains Sodium azide: a POISONOUS AND HAZARDOUS SUBSTANCE which should be handled by trained staff only.

Storage: -20 °C

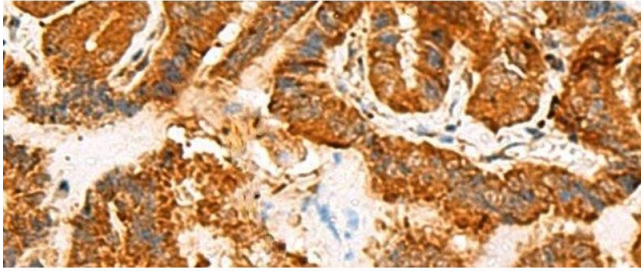
Storage Comment: Store at -20°C. Avoid freeze / thaw cycles.

Images



Immunohistochemistry (Paraffin-embedded Sections)

Image 1. Immunohistochemistry of paraffin-embedded Human tonsil tissue using ASMTL Polyclonal Antibody at dilution of 1:100(x200)



Immunohistochemistry (Paraffin-embedded Sections)

Image 2. Immunohistochemistry of paraffin-embedded Human thyroid cancer tissue using ASMTL Polyclonal Antibody at dilution of 1:100(x200)