

Datasheet for ABIN7246415

**anti-RPS27L antibody****2** Images[Go to Product page](#)

## Overview

Quantity:	200 µL
Target:	RPS27L
Reactivity:	Human, Mouse, Rat
Host:	Rabbit
Clonality:	Polyclonal
Conjugate:	This RPS27L antibody is un-conjugated
Application:	Western Blotting (WB), ELISA, Immunohistochemistry (IHC)

## Product Details

Immunogen:	Fusion protein of human RPS27L
Isotype:	IgG
Characteristics:	Polyclonal Antibody
Purification:	Antigen affinity purification

## Target Details

Target:	RPS27L
Alternative Name:	RPS27L ( <a href="#">RPS27L Products</a> )
Background:	<p>This gene encodes a protein sharing 96 % amino acid similarity with ribosomal protein S27, which suggests the encoded protein may be a component of the 40S ribosomal subunit.</p> <p>RPS27L (Ribosomal Protein S27 Like) is a Protein Coding gene. Among its related pathways are Viral mRNA Translation and Activation of the mRNA upon binding of the cap-binding complex</p>

## Target Details

and eIFs, and subsequent binding to 43S. GO annotations related to this gene include poly(A) RNA binding and cysteine-type endopeptidase activator activity involved in apoptotic process. An important paralog of this gene is RPS27.

Molecular Weight: Observed\_MW: Refer to figures  
Calculated\_MW: 9 kDa

UniProt: [Q71UM5](#)

Pathways: [Positive Regulation of Endopeptidase Activity](#)

## Application Details

Application Notes: WB 1:500-1:2000, IHC 1:40-1:200, ELISA 1:5000-1:10000

Restrictions: For Research Use only

## Handling

Format: Liquid

Concentration: 0.96 mg/mL

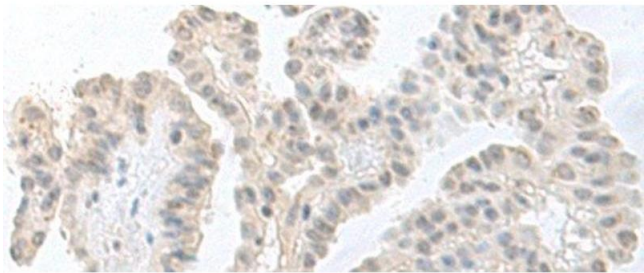
Buffer: PBS with 0.05 % Sodium azide and 40 % Glycerol, pH 7.4

Preservative: Sodium azide

Precaution of Use: This product contains Sodium azide: a POISONOUS AND HAZARDOUS SUBSTANCE which should be handled by trained staff only.

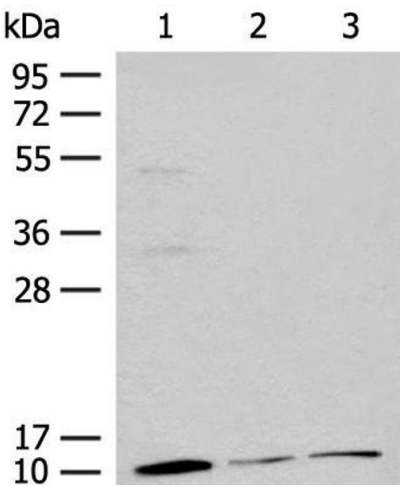
Storage: -20 °C

Storage Comment: Store at -20°C. Avoid freeze / thaw cycles.



Immunohistochemistry (Paraffin-embedded Sections)

**Image 1.** Immunohistochemistry of paraffin-embedded Human thyroid cancer tissue using RPS27L Polyclonal Antibody at dilution of 1:55(x200)



Western Blotting

**Image 2.** Western blot analysis of Mouse adrenal gland tissue Rat lung tissue 231 cell lysates using RPS27L Polyclonal Antibody at dilution of 1:400