

Datasheet for ABIN7246448

**anti-RPS25 antibody**[Go to Product page](#)**1** Image

## Overview

Quantity:	200 µL
Target:	RPS25
Reactivity:	Human, Mouse, Rat
Host:	Rabbit
Clonality:	Polyclonal
Conjugate:	This RPS25 antibody is un-conjugated
Application:	ELISA, Western Blotting (WB)

## Product Details

Immunogen:	Fusion protein of human RPS25
Isotype:	IgG
Characteristics:	Polyclonal Antibody
Purification:	Antigen affinity purification

## Target Details

Target:	RPS25
Alternative Name:	RPS25 ( <a href="#">RPS25 Products</a> )
Background:	<p>Ibosomal protein S25 (RPS25) is a novel MDM2 interacting protein. It may be involved in viral replication of Dicrostoviridae and hepatitis C viruses. RPS25 is overexpressed in human leukemia cells exhibiting adriamycin resistance. It may have a role in p53-mediated apoptosis and cell-cycle arrest. The expected MW of RPS25 is about 15-17 kDa.</p>

## Target Details

Molecular Weight:	Observed_MW: Refer to figures Calculated_MW: 14 kDa
UniProt:	<a href="#">P62851</a>
Pathways:	<a href="#">Ribonucleoprotein Complex Subunit Organization</a> , <a href="#">Ribosome Assembly</a>

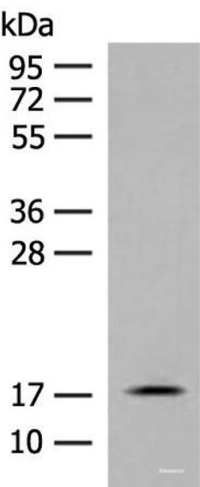
## Application Details

Application Notes:	WB 1:500-1:2000, ELISA 1:5000-1:10000
Restrictions:	For Research Use only

## Handling

Format:	Liquid
Concentration:	1.08 mg/mL
Buffer:	PBS with 0.05 % Sodium azide and 40 % Glycerol, pH 7.4
Preservative:	Sodium azide
Precaution of Use:	This product contains Sodium azide: a POISONOUS AND HAZARDOUS SUBSTANCE which should be handled by trained staff only.
Storage:	-20 °C
Storage Comment:	Store at -20°C. Avoid freeze / thaw cycles.

## Images



### Western Blotting

**Image 1.** Western blot analysis of Mouse small intestines tissue lysate using RPS25 Polyclonal Antibody at dilution of 1:400