

Datasheet for ABIN7246469

**anti-MRPL20 antibody**

3 Images

[Go to Product page](#)

## Overview

Quantity:	200 µL
Target:	MRPL20
Reactivity:	Human, Mouse
Host:	Rabbit
Clonality:	Polyclonal
Conjugate:	This MRPL20 antibody is un-conjugated
Application:	ELISA, Western Blotting (WB), Immunohistochemistry (IHC)

## Product Details

Immunogen:	Fusion protein of human MRPL20
Isotype:	IgG
Characteristics:	Polyclonal Antibody
Purification:	Antigen affinity purification

## Target Details

Target:	MRPL20
Alternative Name:	MRPL20 ( <a href="#">MRPL20 Products</a> )
Background:	MRPL20 is one of more than 70 protein components of mitochondrial ribosomes that are encoded by the nuclear genome. MRPL20 is a subunit of the 39S mitochondrial ribosome. Mitochondrial ribosomes (mitoribosomes) consist of a small 28S subunit and a large 39S subunit. They have an estimated 75 % protein to rRNA composition compared to prokaryotic

## Target Details

ribosomes, where this ratio is reversed. Another difference between mammalian mitoribosomes and prokaryotic ribosomes is that the latter contain a 5S rRNA. Among different species, the proteins comprising the mitoribosome differ greatly in sequence, and sometimes in biochemical properties, which prevents easy recognition by sequence homology.

Molecular Weight: Observed\_MW: Refer to figures  
Calculated\_MW: 17 kDa

UniProt: [Q9BYC9](#)

## Application Details

Application Notes: WB 1:500-1:2000, IHC 1:50-1:200, ELISA 1:5000-1:10000

Restrictions: For Research Use only

## Handling

Format: Liquid

Concentration: 0.96 mg/mL

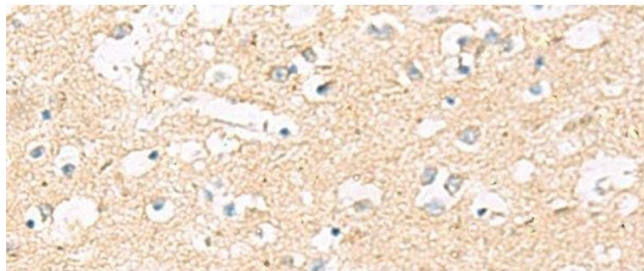
Buffer: PBS with 0.05 % Sodium azide and 40 % Glycerol, pH 7.4

Preservative: Sodium azide

Precaution of Use: This product contains Sodium azide: a POISONOUS AND HAZARDOUS SUBSTANCE which should be handled by trained staff only.

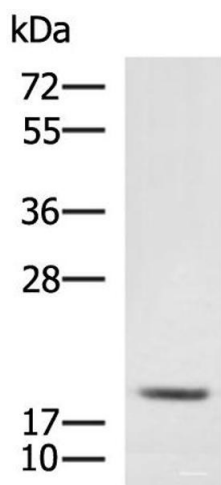
Storage: -20 °C

Storage Comment: Store at -20°C. Avoid freeze / thaw cycles.



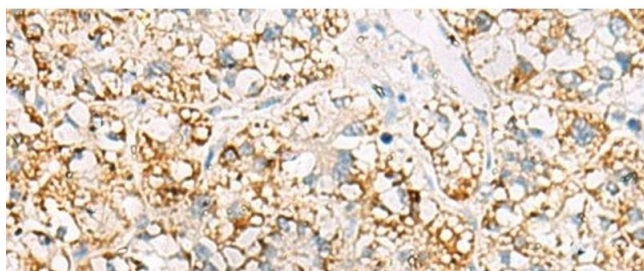
#### Immunohistochemistry (Paraffin-embedded Sections)

**Image 1.** Immunohistochemistry of paraffin-embedded Human brain tissue using MRPL20 Polyclonal Antibody at dilution of 1:60(x200)



#### Western Blotting

**Image 2.** Western blot analysis of RAW264.7 cell lysate using MRPL20 Polyclonal Antibody at dilution of 1:900



#### Immunohistochemistry (Paraffin-embedded Sections)

**Image 3.** Immunohistochemistry of paraffin-embedded Human liver cancer tissue using MRPL20 Polyclonal Antibody at dilution of 1:60(x200)