



Datasheet for ABIN7246499 anti-SRCRB4D antibody



[Go to Product page](#)

1 Image

Overview

Quantity:	200 µL
Target:	SRCRB4D
Reactivity:	Human
Host:	Rabbit
Clonality:	Polyclonal
Conjugate:	This SRCRB4D antibody is un-conjugated
Application:	ELISA, Immunohistochemistry (IHC)

Product Details

Immunogen:	Fusion protein of human SSC4D
Isotype:	IgG
Characteristics:	Polyclonal Antibody
Purification:	Antigen affinity purification

Target Details

Target:	SRCRB4D
Alternative Name:	SSC4D (SRCRB4D Products)
Background:	The scavenger receptor cysteine-rich (SRCR) superfamily is an ancient and highly conserved group of cell surface and/or secreted proteins, some of which are involved in the development of the immune system and the regulation of both innate and adaptive immune responses. Group B SRCR domains usually contain 8 regularly spaced cysteines that give rise to a well-

Target Details

defined intradomain disulfide-bond pattern.

UniProt: [Q8WTU2](#)

Application Details

Application Notes: IHC 1:40-1:200, ELISA 1:5000-1:10000

Restrictions: For Research Use only

Handling

Format: Liquid

Concentration: 1.26 mg/mL

Buffer: PBS with 0.05 % Sodium azide and 40 % Glycerol, pH 7.4

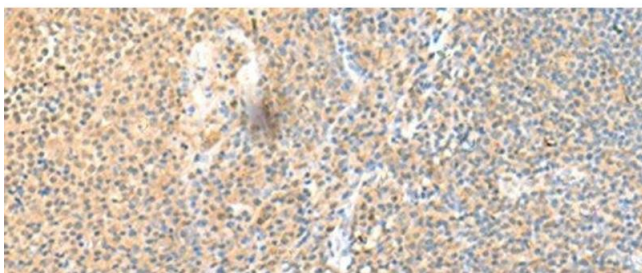
Preservative: Sodium azide

Precaution of Use: This product contains Sodium azide: a POISONOUS AND HAZARDOUS SUBSTANCE which should be handled by trained staff only.

Storage: -20 °C

Storage Comment: Store at -20°C. Avoid freeze / thaw cycles.

Images



Immunohistochemistry (Paraffin-embedded Sections)

Image 1. Immunohistochemistry of paraffin-embedded Human tonsil tissue using SSC4D Polyclonal Antibody at dilution of 1:70(x200)