

Datasheet for ABIN7246544  
**anti-MRPS18B antibody**[Go to Product page](#)

## 2 Images

## Overview

Quantity:	200 µL
Target:	MRPS18B
Reactivity:	Human
Host:	Rabbit
Clonality:	Polyclonal
Conjugate:	This MRPS18B antibody is un-conjugated
Application:	Western Blotting (WB), Immunohistochemistry (IHC), ELISA

## Product Details

Immunogen:	Fusion protein of human MRPS18B
Isotype:	IgG
Characteristics:	Polyclonal Antibody
Purification:	Antigen affinity purification

## Target Details

Target:	MRPS18B
Alternative Name:	MRPS18B ( <a href="#">MRPS18B Products</a> )
Background:	Mammalian mitochondrial ribosomal proteins are encoded by nuclear genes and help in protein synthesis within the mitochondrion. Mitochondrial ribosomes (mitoribosomes) consist of a small 28S subunit and a large 39S subunit. They have an estimated 75 % protein to rRNA composition compared to prokaryotic ribosomes, where this ratio is reversed. Another

## Target Details

difference between mammalian mitoribosomes and prokaryotic ribosomes is that the latter contain a 5S rRNA. Among different species, the proteins comprising the mitoribosome differ greatly in sequence, and sometimes in biochemical properties, which prevents easy recognition by sequence homology. This gene encodes a 28S subunit protein that belongs to the ribosomal protein S18P family. The encoded protein is one of three that has significant sequence similarity to bacterial S18 proteins. The primary sequences of the three human mitochondrial S18 proteins are no more closely related to each other than they are to the prokaryotic S18 proteins. Pseudogenes corresponding to this gene are found on chromosomes 1q and 2q.

Molecular Weight:	Observed_MW: Refer to figures Calculated_MW: 29 kDa
-------------------	--

UniProt:	<a href="#">Q9Y676</a>
----------	------------------------

## Application Details

Application Notes:	WB 1:500-1:2000, IHC 1:25-1:100, ELISA 1:5000-1:10000
--------------------	---

Restrictions:	For Research Use only
---------------	-----------------------

## Handling

Format:	Liquid
---------	--------

Concentration:	0.96 mg/mL
----------------	------------

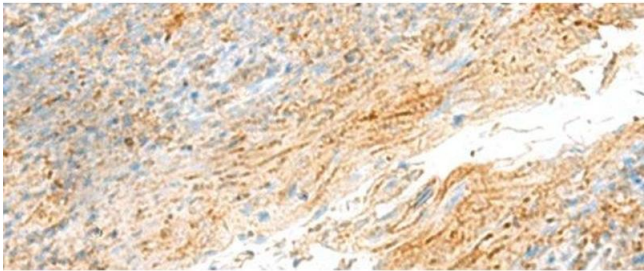
Buffer:	PBS with 0.05 % Sodium azide and 40 % Glycerol, pH 7.4
---------	--

Preservative:	Sodium azide
---------------	--------------

Precaution of Use:	This product contains Sodium azide: a POISONOUS AND HAZARDOUS SUBSTANCE which should be handled by trained staff only.
--------------------	--

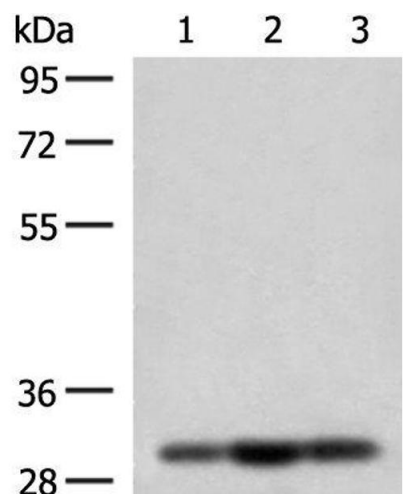
Storage:	-20 °C
----------	--------

Storage Comment:	Store at -20°C. Avoid freeze / thaw cycles.
------------------	---



Immunohistochemistry (Paraffin-embedded Sections)

**Image 1.** Immunohistochemistry of paraffin-embedded Human tonsil tissue using MRPS18B Polyclonal Antibody at dilution of 1:55(x200)



Western Blotting

**Image 2.** Western blot analysis of HepG2 Jurkat and 231 cell lysates using MRPS18B Polyclonal Antibody at dilution of 1:200