

Datasheet for ABIN7246553

**anti-CTRB1 antibody****2** Images[Go to Product page](#)

## Overview

Quantity:	200 µL
Target:	CTRB1
Reactivity:	Human, Mouse, Rat
Host:	Rabbit
Clonality:	Polyclonal
Conjugate:	This CTRB1 antibody is un-conjugated
Application:	Western Blotting (WB), ELISA, Immunohistochemistry (IHC)

## Product Details

Immunogen:	Fusion protein of human CTRB1
Isotype:	IgG
Characteristics:	Polyclonal Antibody
Purification:	Antigen affinity purification

## Target Details

Target:	CTRB1
Alternative Name:	CTRB1 ( <a href="#">CTRB1 Products</a> )
Background:	This gene encodes a member of the serine protease family of enzymes and forms a principal precursor of the pancreatic proteolytic enzymes. The encoded preproprotein is synthesized in the acinar cells of the pancreas and secreted into the small intestine where it undergoes proteolytic activation to generate a functional enzyme. This gene is located adjacent to a

## Target Details

related chymotrypsinogen gene. This gene encodes distinct isoforms, some or all of which may undergo similar processing to generate the mature protein.

Molecular Weight: Observed\_MW: Refer to figures  
Calculated\_MW: 28 kDa

UniProt: [P17538](#)

## Application Details

Application Notes: WB 1:1000-1:5000, IHC 1:40-1:200, ELISA 1:5000-1:10000

Restrictions: For Research Use only

## Handling

Format: Liquid

Concentration: 0.96 mg/mL

Buffer: PBS with 0.05 % Sodium azide and 40 % Glycerol, pH 7.4

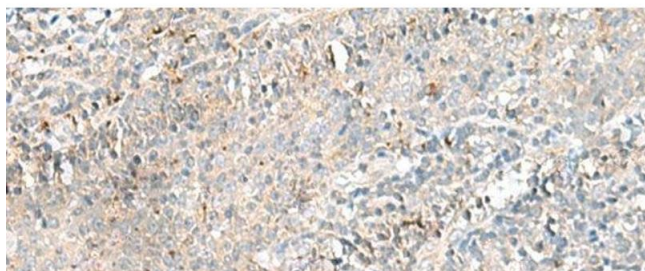
Preservative: Sodium azide

Precaution of Use: This product contains Sodium azide: a POISONOUS AND HAZARDOUS SUBSTANCE which should be handled by trained staff only.

Storage: -20 °C

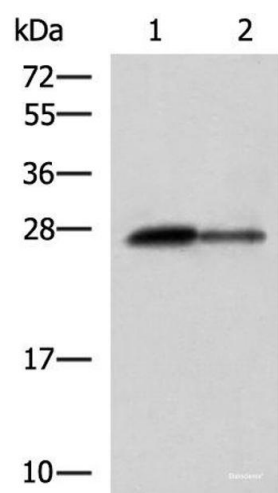
Storage Comment: Store at -20°C. Avoid freeze / thaw cycles.

## Images



### Immunohistochemistry (Paraffin-embedded Sections)

**Image 1.** Immunohistochemistry of paraffin-embedded Human tonsil tissue using CTRB1 Polyclonal Antibody at dilution of 1:55(x200)



Western Blotting

**Image 2.** Western blot analysis of Rat pancreas tissue and Mouse pancreas tissue lysates using CTRB1 Polyclonal Antibody at dilution of 1:1000