

Datasheet for ABIN7246562

anti-OVOL2 antibody**2** Images[Go to Product page](#)

Overview

| | |
|--------------|--|
| Quantity: | 200 µL |
| Target: | OVOL2 |
| Reactivity: | Human, Mouse |
| Host: | Rabbit |
| Clonality: | Polyclonal |
| Conjugate: | This OVOL2 antibody is un-conjugated |
| Application: | Western Blotting (WB), ELISA, Immunohistochemistry (IHC) |

Product Details

| | |
|------------------|-------------------------------|
| Immunogen: | Fusion protein of human OVOL2 |
| Isotype: | IgG |
| Characteristics: | Polyclonal Antibody |
| Purification: | Antigen affinity purification |

Target Details

| | |
|-------------------|---|
| Target: | OVOL2 |
| Alternative Name: | OVOL2 (OVOL2 Products) |
| Background: | <p>This gene encodes a member of the evolutionarily conserved ovo-like protein family. Mammalian members of this family contain a single zinc finger domain composed of a tetrad of C2H2 zinc fingers with variable N- and C-terminal extensions that contain intrinsically disordered domains. Members of this family are involved in epithelial development and</p> |

Target Details

differentiation. Knockout of this gene in mouse results in early embryonic lethality with phenotypes that include neurectoderm expansion, impaired vascularization, and heart anomalies. In humans, allelic variants of this gene have been associated with posterior polymorphous corneal dystrophy.

Molecular Weight: Observed_MW: Refer to figures
Calculated_MW: 30 kDa

UniProt: [Q9BRP0](#)

Pathways: [Tube Formation](#)

Application Details

Application Notes: WB 1:500-1:2000, IHC 1:30-1:150, ELISA 1:5000-1:10000

Restrictions: For Research Use only

Handling

Format: Liquid

Concentration: 0.84 mg/mL

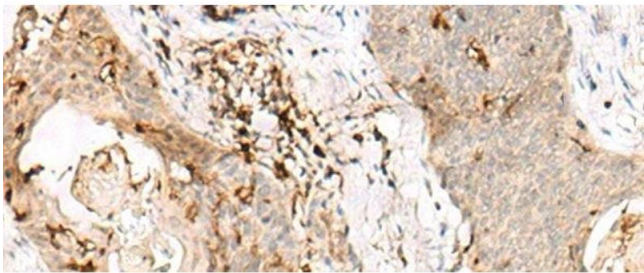
Buffer: PBS with 0.05 % Sodium azide and 40 % Glycerol, pH 7.4

Preservative: Sodium azide

Precaution of Use: This product contains Sodium azide: a POISONOUS AND HAZARDOUS SUBSTANCE which should be handled by trained staff only.

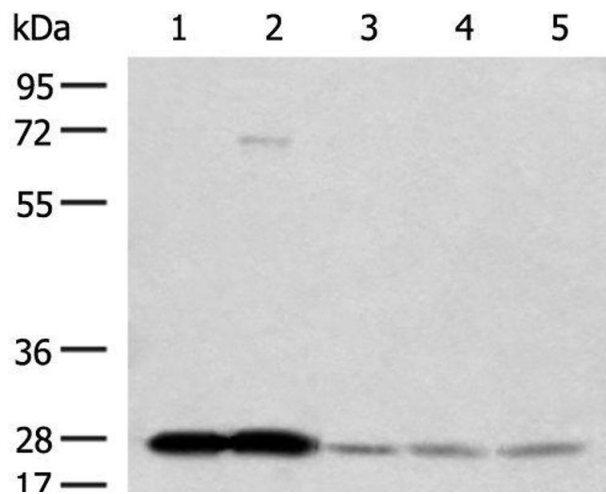
Storage: -20 °C

Storage Comment: Store at -20°C. Avoid freeze / thaw cycles.



Immunohistochemistry (Paraffin-embedded Sections)

Image 1. Immunohistochemistry of paraffin-embedded Human esophagus cancer tissue using OVOL2 Polyclonal Antibody at dilution of 1:50(x200)



Western Blotting

Image 2. Western blot analysis of Human cerebella tissue Human cerebrum tissue Human skin tissue NIH/3T3 cell SKOV3 cell lysates using OVOL2 Polyclonal Antibody at dilution of 1:350